

STANDARD BIDDING DOCUMENT

Procurement of Small Works

ཐོང་ཁག་བདག་སྐྱོང་ ཕྱི་རང་།



NAME OF WORK: Construction of Kitchen cum store at Mendrelgang gewog, Tsirang

Tender Sale : From 25.02.2019 To 11.03.2019

	Date & Time	Place
Bid Submission	11.03.2019, Before 10.00 AM	Gewog Administration, Mendrelgang, Tsirang
Bid Opening	11.03.2019, at 10.30 AM	Gewog Meeting Hall, Mendrelgang gewog

	Date	To
Bidding Documents Issued		Available in www.tsirang.gov.bt or www.cdb.gov.bt

INVITATION FOR BID

(IFB)



འབྲུག་རྒྱལ་ཁབ་སྐྱོང་བཤུགས་

ROYAL GOVERNMENT OF BHUTAN
GEWOG ADMINISTRATION

MENDREL GANG, TSIRANG



MG/Adm/33-2018-2019/ 234

Date: 19th February 2019 Invitation

for Bids (IFB)

The Gewog Administration Mendrelgang under Tsirang Dzongkhag invites sealed bids from eligible and qualified bidders for the execution of following works;

SL No.	Name of work	Estimated Cost (Nu.)	Contractor Category	EMD in Nu.	Contract Duration	Remarks
1.00	Construction of Market Shed, One unit PF toilet and PCC Footpath at Dupi, Mendrelganggewog	0.747m	W3 (Small)	Nu. 14,500	3 months	Limited Bidding
2.00	Construction of Kitchen cum store at Mendrelganggewog	3.311m	W3 (Small)	Nu. 66,000	5 months	Limited Bidding

- Bidding will be conducted through the limited Bidding procedures specified in the RGoB Procurement Manual, and are open to all Bidders from Countries as defined in Section III of the Bidding Documents.
- A complete set of Bidding Documents can be downloaded by interested bidders from the Dzongkhag website www.tsirang.gov.bt or www.cdb.gov.bt e-125/02/2019 to 11.03.2019.
- Bids must be delivered to the Gewog Administration, Mendrelgang on or before 10.00 AM on 11.03.2019. Electronic bidding "shall not" be permitted. Late bids will be rejected. Bids will be opened physically in the presence of the bidders' representatives who choose to attend in person at gewog meeting hall on 11.03.2019 at 10.30 AM.
- All Bids shall be accompanied by a Bid Security of as mentioned above drawn in-favors of Gup, Gewog Administration, Mendrelgang, Tsirang and will have to be in any one of the forms as specified in the bidding document and should be valid for 30 days beyond bid validity.

(Yeshey)

Gup, Gewog Adm.

Mendrelgang, Tsirang

Copy to:

- Dasho Dzongda, Dzongkhag Adm. Tsirang for kind information
- Dasho Dzongrab, Dzongkhag Adm. Tsirang for kind information
- Planning Officer, Dzongkhag Adm. Tsirang for kind information
- FO, Dzongkhag Adm. Tsirang for kind information
- DE, Dzongkhag Adm. Tsirang for kind information
- ICFO, Dzongkhag Adm. Tsirang for kind information and kindly upload the bid documents in dzongkhag Website and cdb website.
- Office copy

Gup# 17115695, Mangmi# 17804874, Adm#17718823, Office#17150680

Contents

INVITATIONS FOR BIDS (IFB)	Error! Bookmark not defined.
Section 1: Instructions to Bidder (ITB)	6
A. General	6
1. Scope of Tender.....	6
2. Corrupt Fraudulent Collusive or Coercive Practices	6
3. Eligible Bidders	7
4. Site Visit	7
B. Content of Bidding Document	7
5. Contents of Bidding Documents.....	7
6. Clarification of Bidding Documents.....	7
7. Amendment of Bidding Documents	7
C. Preparation of Bids	8
8. One Bid per Bidder.....	8
9. Bid Preparation Costs	8
10. Language of Bid	8
11. Documents comprising the Bid	8
13. Alternative Bid	8
14. Bid Price and Discount	8
15. Currencies of Bid and Payment	9
16. Documents comprising the Technical Proposal	9
17. Documents establishing the Qualification of the Bidder.....	9
18. Bid Validity	9
20. Format and Signing of Bid	9
D. Submission and Opening of Bids	9
21. Sealing and Marking of Bids	10
22. Bid Submission Deadline	10
23. Late Bids.....	10
24. Modification, Substitution or Withdrawal of Bids	10
25. Bid Opening.....	10
E. Tender Opening and Evaluation	11
26. Confidentiality.....	11
27. Clarification.....	11
28. Bidder: Contacting the Employer	11
29. Determination of Responsiveness	11
30. Non Conformities, Errors and Omissions.....	11
31. Evaluation and Comparison of Tenders	11
32. Employer's Right to Accept or Reject any or all	12
F. Contract Award	12
33. Award Criteria	12
34. Letter of Intent to Award the Contract/ Notification of Award	12
35. Complaints	12
Section 2 - Bidding Data Sheet	14
A. General	14
B. Bidding Documents	14
C. Preparation of Bids	14
D. Submission and Opening of Bids	15
F. Award of Contract	15
Section 3 – Evaluation and Qualification Criteria	Error! Bookmark not defined.
Section 4: Forms of Bid & Qualification Information	15
Standard Form: Form of bid	17

Standard Form: Qualification Information	18
Standard Form: Letter of Intent	19
Standard Form: Letter of Acceptance	20
Bank Guarantee for Bid Security	21
Section 5. General Conditions of Contract	22
1. Definitions	22
2. Interpretation & Documents forming the Contract.....	22
3. Corrupt, Fraudulent, Collusive or Coercive Practices	23
4. Governing Language and Law	23
5. Engineer's Decision.....	23
6. Delegation.....	24
7. Communications and Notices	24
8. Sub- Contracting.....	24
9. Contractor's Personnel	24
10. Welfare of Labourers & Child Labour	24
11. Safety, Security and Protection of the Environment	24
12. Access to the Site.....	24
13. Documents, Information.	24
14. Property	24
15. Insurance.....	24
16. Possession of the Site	24
17. Commencement of Works	25
18. Completion of Works	25
19. Programme of Works.....	25
20. Early Warning.....	25
21. Compensation Events	25
22. Non-Scheduled Items of Works	25
23. Schedule of Works.....	25
24. Payment Certificates.....	25
25. Payments and Currency	25
26. Retention.....	26
27. Liquidated Damages	26
28. Performance Security	26
29. Price Adjustment	26
30. Completion	26
31. Correction of Defects.....	26
32. Taking Over.....	26
33. Final Account	26
34. Termination	27
35. Payment upon Termination	27
36. Release from Performance.....	27
37. Force Majeure.....	27
38. Settlement of Disputes.....	28
Section 6. Special Conditions of Contract.....	29
Section 7 – Contract Forms	31
Form-1.....	32
Form-2.....	32
Contract Agreement	33
Form-3.....	34
Bank Guarantee for Performance Security	34
Bank Guarantee for mobilisation advance	35

Section 1: Instructions to Bidder (ITB)

A. General

- | | | | |
|----|--|-----|---|
| 1. | Scope of Tender | 1.1 | The Employer, as indicated in the BDS issues this Bidding Document for the procurement of Works as specified in Section 6 (Employer's requirement): The name, identification and identification of this bidding are provided in the BDS . |
| | | 1.2 | The successful Bidder will be required to complete the Works within the Time for Completion stated in the Special Conditions of Contract (SCC). |
| | | 1.3 | Throughout this Bidding Documents;
<ul style="list-style-type: none">(a) The term "in writing means communicated in written form with proof of receipt;(b) If the context so requires, singular means plural and vice versa; and(c) "day" means calendar day. |
| 2. | Corrupt Fraudulent Collusive or Coercive Practices | 2.1 | The Royal Government of Bhutan requires that Employers and the Bidders shall observe the highest standard of ethics during the implementation of procurement proceedings and the execution of Contracts under public funds. |
| | | 2.2 | In pursuance of this requirement, the Employer shall
<ul style="list-style-type: none">(a) exclude the bidder from participation in the procurement proceeding concerned or reject a proposal for award; and(b) declare a bidder ineligible, either indefinitely or for a stated period of time, from participation in procurement proceedings under public funds; |
| | | 2.3 | If it, at any time, determines that the bidder has engaged in corrupt, fraudulent, collusive or coercive practices in competing for, or in executing, a Contract under the public funds. |
| | | 2.4 | The Government defines, for the purposes of this provision, the terms set forth below as follows :

<ul style="list-style-type: none">a) "corrupt practice"¹ is the offering, giving, receiving or soliciting, directly or indirectly, of anything of value to influence improperly the actions of another party;b) "fraudulent practice"² is any intentional act or omission including misrepresentation, that knowingly or recklessly misleads, or attempts to mislead, a party to obtain a financial or other benefits or to avoid an obligation;c) "collusive practice"³ is an arrangement between two or more parties designed to achieve an improper purpose, including to influence improperly the actions of another party; |

¹ 'Another party' refers to a public official acting in relation to the procurement process or contract execution.

² A 'party' refers to a public official; the term 'benefit' and 'obligation' relate to the procurement process or contract execution; and the 'act or omission' is intended to influence the procurement process or contract execution.

³ 'parties' refers to participations in the procurement process including public officials attempting to establish bid prices at artificial, non competitive levels.

d) “**coercive practice**”⁴ is impairing or harming or threatening to impair or harm, directly or indirectly, any party or the property of the party to influence improperly the actions of a party.

2.5 The bidder shall be aware of the provisions on fraud and corruption stated in GCC Clause 3 and GCC Sub-Clause 34.2(d).

2.6 The RGoB requires that the Employer’s personnel have an equal obligation not to solicit, ask for and/or use coercive methods to obtain personal benefits in connection with the said proceedings.

3. Eligible Bidders 3.1 Bidders of the categories **specified in the BDS** are eligible to participate in this bidding process.

3.2 The Employer shall invite Bids using the Open Tendering Method (National Competitive Bidding) or limited tender as applicable.

3.3 The bidder shall meet the qualification requirement stated in the BDS

4. Site Visit 4.1 The Bidders, at their own responsibility and risk, is encouraged to visit and examine the Site and obtain all information that may be necessary for preparing the bid and entering into a Contract for performance of the Works. The costs of visiting the Site shall be at the bidder’s own expense.

B. Content of Bidding Document

5. Contents of Bidding Documents 5.1 The sections comprising the Bidding Document are listed below and should be read in conjunction with any Amendment issued in accordance with ITB Clause 7:

PART 1 Bidding Procedures

- Section 1: Instructions to Bidders (ITB)
- Section 2: Bidding Data Sheet (BDS)
- Section 3: Evaluation and Qualification Criteria
- Section 4: Bidding forms
- Section 5: General Conditions of Contract (GCC)
- Section 6: Special Conditions of Contract (SCC)
- Section 7: Contract Forms
- Section 8: Bill of Quantities & Specifications
- Section 9: Drawings

5.2 The Employer is not responsible for the completeness of the Bidding Document and their Addenda, if they were not obtained directly from the source stated by the Employer in the Invitation for Bids.

5.3 The Bidder is expected to examine all instructions, forms terms, and specifications in the Bidding Documents. Failure to furnish all information or documentation required by the Bidding Documents may result in the rejection of the bid.

6. Clarification of Bidding Documents 6.1 A prospective Bidder requiring any clarification of the Bidding Document shall contact the Employer in writing at the Employer’s address **indicated in the BDS**.

7. Amendment of Bidding Documents 7.1 At any time prior to the deadline for submission of Bid, the Employer may amend the Bidding Document by issuing addenda and extend the deadline for the submission of bids at its discretion. Any amendment issued shall become an integral part of the Bidding Document and shall be communicated in writing to all those who have purchased the Bidding Document.

⁴ A ‘party’ refers to a participant in the procurement in the procurement process or contract execution.

C. Preparation of Bids

- | | |
|----------------------------------|---|
| 8. One Bid per Bidder | 8.1 A Bidder shall submit only one (1) Bid. A Bidder who submits or participates in more than one (1) Bid shall cause all the proposals with the Bidder's participation to be disqualified. |
| 9. Bid Preparation Costs | 9.1 The Bidder shall bear all costs associated with the preparation and submission of its Bids, and the Employer shall in no case be responsible or liable for those costs, regardless of the conduct or outcome of the Bidding process. |
| 10. Language of Bid | 10.1 All documents relating to the Bid shall be in the language specified in the BDS. |
| 11. Documents comprising the Bid | <p>11.1 The original and copy(ies) of Bid submitted by the Bidder shall comprise the following:</p> <ul style="list-style-type: none"> (a) The Bid form (in the format indicated in Section IV – Forms of Bid, Qualification Information, Letter of Acceptance, and Contract); (b) License and certificate (c) Bid Security in accordance with Clause 19; (d) Priced Bill of Quantities; (e) and any other materials required to be completed and submitted by Bidders, as specified in the BDS. <p>11.2 The Instruction to Bidders, Bidding Data Sheet, General Conditions of Contract, Special Conditions of Contract, Specifications and drawings are for the information of the bidders and is not required to be submitted by the bidder,</p> |
| 12 Letter of Bid and Schedule | 12.1 The letter of Bid, Schedules, and all documents listed under Clause 11, shall be prepared using the relevant forms in Section 4 (Bidding Forms), if so provided in BDS. The forms must be completed without any alterations to the text, and no substitutes shall be accepted. All blank spaces shall be filled in with the information requested. |
| 13. Alternative Bid | 13.1 Alternative Bid shall not be considered in small works. |
| 14. Bid Price and Discount | <p>14.1 The prices and discounts quoted by the Bidder in the Letter of Bid and in the Schedules shall confirm to the requirements specified below;</p> <p>14.2 The bidder shall submit a bid for the whole of the works described in ITB 1.1 by filling in prices for all items of the Works, as identified in Section 4, Bidding Forms. In case of admeasurements contracts, the Bidder shall fill in rates and prices for all items of the Works described in the Bill of Quantities. Items against which no rate or price is entered by the Bidder will not be paid for by the Employer when executed and shall be deemed covered by the rates for other items and prices in the Bill of Quantities.</p> <p>14.3 The Bid price shall take into account the cost of materials, transportation, labour, taxes, levies, overheads and profit and any other cost. The Bid price shall be fixed for the duration of performance of the Contract and shall not be subject to any adjustment on any account. The Bid price shall be applicable for the whole works described in the Drawings, Specifications and Schedule of Works.</p> |

15	Currencies of Bid and Payment	15.1	All prices shall be quoted in Bhutanese Ngultrum (BTN) and shall be paid in BTN.
16	Documents comprising the Technical Proposal	16.1	The bidder shall furnish a work plan in simple bar chart and other information if provided in BDS, to demonstrate the adequacy of the Bidders' proposal to meet the work requirements and the completion time.
17	Documents establishing the Qualification of the Bidder	17.1	To establish its qualification to perform the Contract in accordance with Section 3 (Evaluation and Qualification Criteria) the Bidder shall provide the information requested in the corresponding information sheets included in Section 4 (Bidding Forms)
18	Bid Validity	18.1	Bids shall remain valid for the period specified in the BDS . Any Bids which does not meet the validity requirement as per the BDS shall be rejected by the Employer as non-responsive.
19	Bid Security	19.1	The Bidder shall at their option furnish, as part of the Bid, a Bid Security as specified in the BDS issued by any reputed Financial Institutions in Bhutan and shall be valid thirty (30) days beyond the Bid validity period. <ul style="list-style-type: none"> a) Unconditional Bank Guarantee; b) A demand Draft; or c) Cash Warrant
		19.2	In exceptional circumstances, prior to the expiration of the Bid validity period, the Employer may solicit the Bidder's consent to an extension of the Bid validity period. The request and responses shall be made in writing. The validity of Bid Security shall be suitably extended promptly.
		19.3	The Bid Security may be forfeited: <ul style="list-style-type: none"> (a) if the Bidder withdraws the Bid after Bid opening during the period of Bid validity. Further the bidder may be excluded from future participation for a period of two years. (b) if the Bidder does not accept the correction of the Bid price, pursuant to clause 31; or (c) in the case of a successful Bidder, if the Bidder fails within the specified time limit to sign the Agreement; or furnish the required Performance Security.
20	Format and Signing of Bid	20.1	The Bidder shall prepare one (1) original of the documents comprising the Bid as described in ITB Clause 11 and clearly mark it "ORIGINAL." In addition, the Bidder shall prepare the number of copies of the Bid, as specified in the BDS and clearly mark each of them "COPY." In the event of any discrepancy between the original and the copies, the original shall prevail.
		20.2	The original and each copy of the Bid shall be typed or written in indelible ink and shall be signed by the person duly authorized to sign on behalf of the Bidder.
		20.3	Any interlineations, erasures, or overwriting shall be valid only if they are signed or initialled by the person(s) signing the Bid.

D. Submission and Opening of Bids

21 Sealing and Marking of Bids	21.1	The Bidder shall enclose the original in one (1) envelope and all the copies of the bid in another envelope, duly marking the envelopes as "ORIGINAL" and "COPY." These two (2) envelopes shall then be enclosed in one (1) single outer envelope.
	21.2	The inner envelopes shall: <ul style="list-style-type: none"> (a) Be signed across the seals by the person authorised to sign the Bid on behalf of the Bidder; (b) Be marked "ORIGINAL" and "COPY" and (c) Bear the name and address of the Bidder.
	21.3	The outer envelope shall; <ul style="list-style-type: none"> (a) Be sealed with adhesive or other sealant to prevent reopening;
	21.4	be addressed to the Employer at the address specified in the BDS; bear a statement "DO NOT OPEN BEFORE....." the time and date for Bid opening as specified in the BDS.
	21.5	If all or any envelopes are not sealed and marked as required by ITB Sub-Clause 21, the Employer shall not reject the bids but assume no responsibility for the misplacement or premature opening of the Bid.
22 Bid Submission Deadline	22.1	Bids must be received by the Employer at the address and no later than the date and time specified in the BDS.
	22.2	Bids may be hand delivered, posted by registered mail or sent by courier.
	22.2	The Employer may, at its discretion, extend the deadline for the submission of Bids by amending the Bidding Document in accordance with ITB Clause 7, in which case all rights and obligations of the Employer and Bidders previously subject to the deadline shall thereafter be subject to the new deadline as extended.
23 Late Bids	23.1	Late bids shall not be considered and shall be returned unopened
24 Modification, Substitution or Withdrawal of Bids	24.1	A Bidder may modify, substitute or withdraw their Bids after it has been submitted by sending a written notice before the deadline for submission of Bids.
25 Bid Opening	25.1	The Employer shall open the Bids in the presence of the bidders who is attending the bid opening, including modifications or substitutions made pursuant to ITB Clause 24. Bidders or their representatives shall be allowed to attend and witness the bid opening and shall sign a register evidencing their attendance.
	25.2	The name of the Bidder, Bid modifications, substitutions or withdrawals, total amount of each Bid, number of corrections, discounts, and the presence or absence of requisite Bid Security, and such other details as the Employer, at its discretion, may consider appropriate, shall be read out aloud and recorded.
	25.3	The Employer shall prepare minutes of the Bid opening. The minutes shall include, as a minimum, the name of the Bidders and whether there has been a withdrawal, substitution or modification; the Bid Price including any discounts and the presence or absence of a Bid Security, if one was required.
	25.4	Bids not opened and read out at the Bid opening shall not be considered, irrespective of the circumstances, and shall be returned unopened to the Bidder

E. Tender Opening and Evaluation

26 Confidentiality	26.1	After the opening of Bids, information relating to the examination, clarification, and evaluation of Bids and recommendations for award shall not be disclosed to Bidders or other persons not officially concerned with the evaluation process until after the award of the Contract is announced.
27 Clarification	27.1	The Employer may ask Bidders for clarification of their Bids in order to facilitate the examination and evaluation of Bids. The request for clarification and the response shall be in writing, and any changes in the prices or substance of the Bid shall not be sought, offered or permitted, except to confirm the correction of arithmetical errors discovered by the Employer in the evaluation of the Bids, in accordance with ITB Clause 31.
28 Bidder: Contacting the Employer	28.1	Following the opening of Bids and until the Contract is signed no Bidder shall make any unsolicited communication to the Employer or try in any way to influence the Employer's examination and evaluation of Bids which may result in the rejection of bids. If any Bidder wishes to contact the Employer on any matter related to the Bidding process, it should do so in writing
29 Determination of Responsiveness	29.1	Prior to detailed evaluation of bids, the employer shall determine whether each bid (a) meets the eligibility criteria defined in ITB clause 3; (b) has been properly signed; (c) is accompanied by the bid security; and (d) is substantially responsive to the requirements of the bidding documents.
	29.2	A substantially responsive Bid is one that conforms in all respects to the requirements of the Bidding Document without material deviation, reservation or omission. A material deviation, reservation or omission is one that: <ul style="list-style-type: none"> (a) affects in any substantial way the scope, quality, or performance of the Works specified in the Contract; or (b) limits in any substantial way, or is inconsistent with the Bid Document, the Employer's rights or the Bidder's obligations under the Contract; or (c) if rectified would unfairly affect the competitive position of other Bidders presenting substantially responsive Bids.
	29.3	If a Bid is not substantially responsive to the Bidding Document it shall be rejected by the Employer and shall not subsequently be made responsive by the Bidder by correction of the material deviation, reservation or omission.
	29.4	There shall be no requirement as to the minimum number of responsive Bids.
30 Non Conformities, Errors and Omissions	30.1	The Employer may regard a Bid as responsive even if it contains minor deviations that do not materially alter or depart from the characteristics, terms, conditions and other requirement set forth in the Bidding Document or if it contains errors or oversights that are capable of being corrected without affecting the substance of the Bid.
31 Evaluation and Comparison of Tenders	31.1	The Employer shall evaluate and compare only those Bids determined to be substantially responsive to the requirements of the Bidding Document. Substantially responsive Bids are those which fulfil the requirements of ITB Clauses 11 and 12.

- | | |
|---|---|
| 31.2 | The evaluation will take into account corrected Bid Price and discounts (if any). |
| 31.3 | The Employer will check substantially responsive Bids for any arithmetical errors. Where there is a discrepancy between the amounts in figures and words, the amount in words will govern. If a Bidder refuses to accept the correction, its Bids shall be rejected. The Employer shall correct arithmetical errors on the following basis: |
| | (a) if there is a discrepancy between the unit price and the line item total, the unit price shall prevail and the total price shall be corrected, unless in the opinion of the Employer there is an obvious misplacement of the decimal point in the unit price, in which case the total price, as quoted, shall govern and the unit price shall be corrected; and |
| 32. Employer's Right to Accept or Reject any or all | 32.1 The Employer reserves the right to accept any Bid, to annul the Bid proceedings, or to reject any or all Bids, at any time prior to Contract award, without thereby incurring any liability to Bidders, or any obligation to inform Bidders of the grounds for the Employer's actions. |

F. Contract Award

- | | |
|--|--|
| 33. Award Criteria | 33.1 The Employer shall award the Contract to the Bidders whose offer is substantially responsive to the Bidding Document and that has been determined to be the lowest evaluated Bid, provided that the Bidder is determined to be qualified to perform the Contract satisfactorily |
| 34. Letter of Intent to Award the Contract/
Notification of Award | <p>34.1 The Employer shall notify the concerned Bidder whose bid has been selected in accordance with ITB 33.1 in writing (in the format in Section 4-hereafter called the "Letter of Intent to Award") that the Employer has intention to accept its bid and the information regarding the name, address and amount of selected bidder shall be given to all other bidders who submitted the bid. Such notification should be communicated in writing, including by cable, facsimile, telex or electronic mail to all the bidders on the same day of dispatch. The Employer shall ensure that the same information is uploaded on their website on the same day of dispatch.</p> <p>34.2 If no bidder submits an application pursuant to ITB 35 within a period of ten (10) days of the notice provided under ITB 34.1, Prior to the expiration of the period of Bid validity, the Employer shall notify the successful Bidder, in writing that its Bid has been accepted. Until a formal contract is prepared and executed, the Notification of Award shall constitute a binding Contract.</p> <p>34.3 Within fifteen (15) working days of the receipt of the Notification of Award from the Employer, the successful Bidder shall furnish the Performance Security, in the amount specified in the BDS.</p> <p>34.4 The proceeds of the performance security shall be payable to the Employer unconditionally upon first written demand as compensation for any loss resulting from the Contractor's failure to complete its obligations under the Contract</p> <p>34.5 Within fifteen (15) working days of receipt of the notification of award, the successful Bidder shall sign, date and return it to the Employer.</p> |
| 35.Complaints | <p>35.1 The Bidder shall submit the complaint in writing within ten (10) days from the date of letter of intent to award the contract pursuant to ITB 34.1 to the Employer.</p> <p>35.2 The Bidder may appeal to the Independent Review Body only if the Employer has not delivered the decision within the specified time, or the</p> |

complainant is not satisfied with the decision of the Employer in accordance with rules and procedures of Independent Review Body.

Section 2 - Bidding Data Sheet	
Instructions for completing the Bidding Data Sheet are provided, as needed, in the notes in italics mentioned for the relevant ITB Clauses	
ITB Clause	Amendment of, and Supplements to, Clauses in the Instructions to Bidders
A. General	
ITB 1.1	The Employer is [Gup, Gewog Administration, Mendrelgang, Tsirang]
	The Name and Identification of the Contract is/are [Construction of kitchen cum store at Mendrelgang]
	The Works are :-Const. of kitchen cum store, site development and wiring
ITB 3.2	<p><i>[Choose option A or B, whichever is applicable, and delete the other option].</i></p> <p>Option A: Limited Bidding method:</p> <p>All Bidders regardless of whether enlisted or not enlisted with the Dzongkhag may submit Bids provided they otherwise qualify.</p>
ITB 3.3	The evaluation shall be based on the lowest price of the responsive bidder and the work will award to the lowest responsive bidder. <i>[Generally the selection is based on the lowest price. If there is a specific project need basic minimum technical qualification requirement should specified here]</i>
B. Bidding Documents	
ITB 7.1	<p>For <u>clarification of Tenders purposes</u> only, the Employer's address is:</p> <p>Attention: Offtg Dzongkhag Engineer</p> <p>Address: Dzongkhag Administration, Tsirang</p> <p>Telephone: 17683596</p> <p>Facsimile number: 06-471202</p>
C. Preparation of Bids	
ITB 15.1	The Bid validity period shall be [60] days .
ITB 15.2	<p>A Bid Security in the amount of Nu. [66,000] will be required, in the form;</p> <ul style="list-style-type: none"> a) Unconditional Bank guarantee b) Cash warrant; or c) Demand draft
ITB 16.1	A simple bar chart is <i>required or not required [delete which is not appropriate]</i>
ITB 19.1	In addition to the original, <i>[one]</i> copies shall be submitted.

D. Submission and Opening of Bids

ITB 17.2	The inner and outer envelopes shall bear the following additional identification marks: /Do not open before 10:30 am on 11/03/2019
ITB 17.2	For <u>Bid submission purposes</u> only, the Employer's address is: Attention: Gup Address: Gewog Administration, Mendrelgang, Tsirang The deadline for the submission of Tenders is: Time & Date 10:00 am on 11.03.2019
ITB 21.1	The Bid opening shall take place on the same day as the closing day of the bid submission at: [Gewog Meeting Hall] Date: [11/03/2019]; Time:[10:30 am]

F. Award of Contract

ITB 34.2	The amount of Performance Security shall be [10%] ten percent of the Contract Price.
ITB 34.3	The lowest evaluated bidder whose bid is considered abnormally low or unbalanced, following prescribed evaluation procedures, the bids shall be required to provide differential security in the form of " cash warrant " in addition to performance security. The cash warrant shall be valid for at least 6 months, and thereafter can be converted into bank guarantee. The payment has to be made within 15 working days after receipt of the letter of acceptance by the bidder. The additional security amount to be provided by the bidders, in the form of cash warrant shall be the difference between departmentally estimated amount and the amount quoted by the successful bidder less 20% of the departmentally estimated amount i.e

This section contains all the criteria that the Employer shall use to evaluate bids and qualify Bidders if the bidding was not preceded by a prequalification exercise and post qualifications are applied. Procuring Agency may apply basic minimum technical qualification requirement (manpower and equipment's) only if there is a project specific need.

1. Evaluation

1.1 Evaluation shall be done to determine the responsiveness and the award shall be made to the lowest evaluated bidder.

Section 4: Forms of Bid & Qualification Information

Table of Standard Forms

Standard Form: Form of Bid

Standard Form: Letter of Intent

Standard Form: Letter of Acceptance

Standard Form: Form of bid

Notes on Form of Bid:

The Bidder shall fill in and submit this bid form with the Bid. If Bidders do not fill in the Contract Price and does not sign this Bid form, the bids will be rejected.

_____ [date]

To _____

Address _____

We offer to execute the contract for construction of “_____” in accordance with the Conditions of Contract accompanying this Bid for the Contract Price of (.....) [amount in figures] (.....) [amount in words] [name of currency].

The contract shall be paid in Ngultrum (Nu.)

This Bid and your written acceptance of it shall constitute a binding Contract between us. We understand that you are not bound to accept the lowest or any Bid you receive.

We hereby confirm that this Bid complies with the Bid validity and Bid Security required by the bidding documents and specified in the Bidding Data.

Authorized Signature: _____

(Affix Legal Stamp)

Name and Title of Signatory: _____

Name of Bidder: _____

Address: _____

Standard Form: Qualification Information

Notes on Form of Qualification Information: The following information is to be filled in by bidders which will be used for purposes of evaluation

1. Individual bidders

1.1 Constitution of legal status of Bidder [attach copy]

Place of registration: _____

Principal place of business: _____

Power of attorney of signatory of Bid [attach]

1.2 Qualifications and experience of key personnel proposed for administration and execution of the Contract. Refer BDS. The supporting documents such detailed CVs signed in original supported by certificates for qualification and experience.

Position	Name	Qualification & year of experience (general)	Year of experience in proposed position	Remarks
Supervisor				

Standard Form: Letter of Intent

(Letterhead paper of the Employer)

Notes on standard form of letter of Intent

This issuance of Letter of Intent(always before letter of acceptance) is the information of the selection of the bid of the successful bidder by the Employer and for providing information to other unsuccessful bidders who participated in the bid as regards the outcome of the procurement process

The Employer shall allow 10 days as described in ITB 34.2 between this letter of intent and letter of acceptance to allow aggrieved bidders to challenge your decision if they feel they have treated unfairly.

(Insert date)

To:-----[Name and address of the Contractor]

This is to notify you that, it is our intention to award the contract for your Bid dated-----[Insert date]
for execution of the-----[Insert name of
the contract and identification number, as given in the BDS/SCC] for the Contract Price of-----
-----[Insert amount in figure and words and
name of currency] as corrected and modified[if any corrections] in accordance with the Instructions to Bidders.

Authorized Signature: -----

Name and Title of Signatory:-----

Name of Agency:-----

CC:

[Insert name and address of all other bidders who submitted the bid]

Standard Form: Letter of Acceptance

[letterhead paper of the Employer]

Notes on Standard Form of Letter of Acceptance

The Letter of Acceptance will be the basis for formation of the Contract as described in Clauses 31 and 32 of the Instructions to Bidders. This Standard Form of Letter of Acceptance should be filled in and sent to the successful Bidder only after evaluation of bids has been completed.

_____ [date]

To: _____
[name of the Contractor]

[address of the Contractor]

This is to notify that your Bid dated _____ for the execution of the contract for the construction of “_____ - _____” for the Contract Price _____ [amount in numbers] _____ [amount in words] _____ [name of currency], as corrected and modified in accordance with the Instructions to Bidders is hereby accepted by our Agency. The start date of the project is _____. The completion date for whole of the works shall be _____.

You are hereby instructed to proceed with the execution of the said Works in accordance with the Contract documents.

Authorized Signature: _____

Name and Title of Signatory: _____

Name of Agency: _____

Attachment: Agreement

Bank Guarantee for Bid Security

[this is the format for the Bid Security to be issued by a financial institutions in Bhutan in accordance with ITB Clause 19]

Invitation for Bid No:

Date:

Bid Package No:

To:

[Name and address of Employer]

TENDER GUARANTEE No:

We have been informed that *[name of Bidder]* (hereinafter called "the Bidder") intends to submit to you its Bid dated *[date of bid]* (hereinafter called "the Tender") for the execution of the Works of *[description of works]* under the above Invitation for Bids (hereinafter called "the IFB").

Furthermore, we understand that, according to your conditions Bids must be supported by a Bid Guarantee.

At the request of the Bidder, we *[name of bank]* hereby irrevocably undertake to pay you, without cavil or argument, any sum or sums not exceeding in total an amount of Nu *[insert amount in figures and words]* upon receipt by us of your first written demand accompanied by a written statement that the Bidder is in breach of its obligation(s) under the Bid conditions, because the Bidder:

- (a) has withdrawn its Bids during the period of Bid validity specified by the Bidder in the Form of Bid; or
- (b) does not accept the correction of errors in accordance with the Instructions to Bidders ITB; or
- (c) having been notified of the acceptance of the Bid by the Employer during the period of Bid validity, (i) fails or refuses to furnish the performance security in accordance with the ITT, or (ii) fails or refuses to execute the Contract Form,

This guarantee will expire

- (a) if the Bidder is the successful Bidder, upon our receipt of a copy of the Performance Security and a copy of the Contract signed by the Bidder as issued by you; or
- (b) if the Bidder is not the successful Bidder, thirty days after the expiration of the Bidder's Tender validity period, being *[date of expiration of the Tender]*.

Consequently, we must receive at the above-mentioned office any demand for payment under this guarantee on or before that date.

Signature

Signature

Section 5. General Conditions of Contract

1. Definitions
 - 1.1 The following words and expressions shall have the meaning hereby assigned to them. Boldface type is used to identify the defined terms:
 - (a) **Completion Certificate** means the Certificate issued by the Employer as evidence that the Contractor has executed the Works in all respects as per drawing, specifications, and Conditions of Contract.
 - (b) The **Completion Date** is the date of completion of the Works as certified by the Engineer, in accordance with GCC Clause 18.
 - (c) **Contract** means the Agreement entered into between the Employer and the Contractor to execute, complete and maintain the Works.
 - (d) **Contractor** means the person or corporate body whose Tender to carry out the Works has been accepted by the Employer and is named as such in the SCC.
 - (e) **Contract Price** is the price stated in the Letter of Acceptance and thereafter as adjusted in accordance with the provisions of the Contract. The **Contractor's Bid** is the completed Bid Document including the priced offer submitted by the Contractor to the Employer.
 - (f) **Days** mean calendar days.
 - (g) A **Defect** is any part of the Works not completed in accordance with the Contract.
 - (h) The **Employer** is the party named in the SCC who employs the Contractor to carry out the Works.
 - (i) The **Engineer** is the person named in the SCC, who is responsible for supervising the execution of the works and administering the Contract.
 - (j) The **Intended Completion Date** is the date specified in the SCC on which the Contractor shall complete the Works and may be revised if extension of time or an acceleration order is issued by the Engineer.
 - (k) The **Site** is the area defined as such in the SCC.
 - (l) The **Works** are what the Contract requires the Contractor to construct, install, and hand over to the Employer, as defined in the SCC.
2. Interpretation & Documents forming the Contract
 - 2.1 In interpreting the GCC, singular also means plural, male also means female or neuter, and the other way around. Headings in the GCC shall not be deemed part thereof or be taken into consideration in the interpretation or construance of the Contract. Words have their normal meaning under the language of the Contract unless specifically defined.
 - 2.2 The following documents forming the Contract shall be interpreted in the following order of priority:
 - (a) the signed Contract Agreement.
 - (b) the letter of Notification of Award.
 - (c) the completed Bid form as submitted by the Bidder.
 - (d) the Special Conditions of Contract.
 - (e) the General Conditions of Contract.
 - (f) Specifications

- (g) the Drawings.
 - (h) any other document listed in the PCC as forming part of the Contract.

- 3. Corrupt, Fraudulent, Collusive or Coercive Practices
 - 3.1 The Government requires that Employers, as well as Contractors shall observe the highest standard of ethics during the implementation of procurement proceedings and the execution of Contracts under public funds.

 - 3.2 In pursuance of this requirement, the Employer shall
 - (a) exclude the Contractor from participation in the procurement proceedings concerned or reject a proposal for award; and
 - (b) declare a Contractor ineligible, either indefinitely or for a stated period of time, from participation in procurement proceedings under public fund;

 - 3.3 The Government defines, for the purposes of this provision, the terms set forth below as follows:
 - (a) corrupt practice⁵ is the offering, giving, receiving or soliciting, directly or indirectly, of anything of value⁶ to influence improperly the actions of another party;
 - (b) "fraudulent practice"⁷ is any intentional act or omission, including a misrepresentation, that knowingly or recklessly misleads, or attempts to mislead, a party to obtain a financial or other benefit or to avoid an obligation;
 - (c) "collusive practice"⁸ is an arrangement between two or more parties designed to achieve an improper purpose, including to influence improperly the actions of another party; and
 - (d) "coercive practice"⁹ is impairing or harming, or threatening to impair or harm, directly or indirectly, any party or the property of the party to influence improperly the actions of a party.

 - 3.4 The Government requires that the Client's personnel have an equal obligation not to solicit, ask for and/or use coercive methods to obtain personal benefits in connection with the said proceedings.

- 4. Governing Language and Law
 - 4.1 The Contract as well as all correspondence and documents relating to the Contract exchanged by the Contractor and the Employer, shall be written in English unless otherwise stated in the SCC. The Contract shall be governed by and interpreted in accordance with the laws of the Kingdom of Bhutan.

- 5. Engineer's Decision
 - 5.1 Except where otherwise specifically stated in the SCC, the Engineer will decide Contractual matters between the Employer and the Contractor in the role as representative of the Employer.

⁵ "another party" refers to a public official acting in relation to the procurement process or contract execution. In this context, "public official" includes staff and employees of any organizations (including any institutions providing finance for the Works) taking or reviewing procurement decisions.

⁶ "anything of value" includes, but is not limited to, any gift, loan, fee, commission, valuable security or other asset or interest in an asset; any office, employment or contract; any payment, discharge or liquidation of any loan, obligation or other liability whatsoever, whether in whole or in part; any other services, favour or advantage, including protection from any penalty or disability incurred or apprehended or from any action or proceeding of a disciplinary or penal nature, whether or not already instituted and including the exercise or the forbearance from the exercise of any right or any official power or duty.

⁷ a "party" refers to a public official; the terms "benefit" and "obligation" relate to the procurement process or contract execution; and the "act or omission" is intended to influence the procurement process or contract execution.

⁸ "parties" refers to participants in the procurement process (including public officials) and an "improper purpose" includes attempting to establish bid prices at artificial, non competitive levels.

⁹ a "party" refers to a participant in the procurement process or contract execution.

6. Delegation	6.1 The Engineer may delegate any of his duties and responsibilities to his representative, after notifying the Contractor, and may cancel any delegation, without retroactivity, after notifying the Contractor.
7. Communications and Notices	7.1 Communications between Parties pursuant to the Contract shall be in writing to the address specified in the SCC. A notice shall be effective when delivered or on the notice's effective date, whichever is later.
8. Sub- Contracting	8.1 The Contractor shall not be permitted to subcontract any part of the Works in whole or in part.
9. Contractor's Personnel	9.1 The Contractor shall employ the key personnel named in the Schedule of Key Personnel, as referred to in the SCC, to carry out the functions stated in the Schedule, or other personnel approved by the Engineer.
10. Welfare of Labourers & Child Labour	<p>10.1 The Contractor shall provide proper accommodation to his labourers and arrange proper water supply, conservancy and sanitation arrangements at the site in accordance with relevant regulations, rules and orders of the government.</p> <p>10.2 The Contractor shall comply with the applicable minimum age, labour laws and requirements of (including applicable treaties which have been ratified by) the Government of Bhutan regarding hazardous forms of child labour.</p>
11. Safety, Security and Protection of the Environment	<p>11.1 The Contractor shall throughout the execution and completion of the Works and the remedying of any defects therein :</p> <p>(a) have full regard for the safety of all persons entitled to be upon the Site and keep the Site and the Works in an orderly state;</p> <p>(b) provide and maintain at the Contractors own cost all lights, guards, fencing, warning signs and watching for the protection of the Works or for the safety on-site; and</p> <p>(c) take all reasonable steps to protect the environment on and off the Site and to avoid damage or nuisance to persons or to property of the public or others resulting from pollution, noise or other causes arising as a consequence of the Contractors methods of operation.</p>
12. Access to the Site	12.1 The Contractor shall allow the Engineer and any person authorised by the Engineer access to the Site and to any place where work in connection with the Contract is being carried out or is intended to be carried out.
13. Documents, Information.	13.1 The Contractor shall furnish to the Engineer all information, schedules, calculations and supporting documentation that may be requested of it.
14. Property	14.1 If the contract is terminated by the Employer because of the contractors default, then, the contractor shall not be allowed to remove any materials on the Site, Plant, and Temporary Works until the matter is amicably resolved.
15. Insurance	<p>15.1 The Contractor shall provide insurance as stated in the SCC</p> <p>15.2 The Contractor shall deliver policies and certificates of insurance to the Engineer, for the Engineer's approval, before the Start Date.</p> <p>15.3 If the Contractor does not provide any of the policies and certificates required, the Employer may effect the insurance which the Contractor should have provided and recover the premiums the Employer has paid from payments otherwise due to the Contractor or, if no payment is due, the payment of the premiums shall be a debt due.</p>
16. Possession of the Site	16.1 The Employer shall give possession of the Site, or parts of the Site, to the Contractor on the date(s) specified in the SCC.

17. Commencement of Works	17.1	The Contractor may commence execution of the Works on the Start Date, or other such date as specified in the SCC, and shall carry out the Works in an expeditious manner.
	17.2	If the Contractor fails to commence the works within the above stated period, the Employer may, at his sole discretion, terminate the Contract and forfeit the Performance Security, if any.
18. Completion of Works	18.1	The Contractor shall complete the Works within the number of days stated in the SCC from the date of commencing the Works on the Site.
19. Programme of Works	19.1	Within the time stated in the SCC, the Contractor shall submit to the Engineer for approval a work program. The Contractor shall submit to the Engineer for approval an updated Programme at intervals no longer than the period stated in the SCC.
20. Early Warning	20.1	The Contractor shall warn the Engineer at the earliest opportunity of specific likely future events or circumstances that may adversely affect the quality of the work result in increase to the Contract Price or delay in the execution of the Works.
21. Compensation Events	21.1	The following shall be Compensation Events: (a) the Employer does not give access to the Site or part of the Site by the Site Possession Date stated in the SCC; and (b) if the payment is delayed pursuant to Clause 25.1.
	21.2	If a Compensation Event would prevent the work being completed before the Intended Completion Date, the Intended Completion Date shall be extended, as appropriate, by the Engineer.
22. Non-Scheduled Items of Works	22.1	The Contractor shall be paid for non-scheduled items of works only when the Engineer approves such works and at the rates and in the manner stated in the SCC.
23. Schedule of Works	23.1	The Schedule of Works will contain rates for all items for the construction including temporary works, installation, testing, and commissioning work to be done by the Contractor.
	23.2	The Contractor shall be paid for the quantity of the work done at the rate in the Contract Agreement for each item.
	23.3	The Contractor shall be entirely responsible for all taxes, duties, license fees, and other such levies imposed outside and inside Bhutan.
24. Payment Certificates	24.1	The Contractor shall submit to the Engineer monthly statements of the estimated value of the work executed less the cumulative amount certified previously. The Engineer shall check the Contractor's monthly statement and certify the amount to be paid to the Contractor.
	24.2	The value of work executed shall be determined by the Engineer.
	24.3	The value of work executed shall comprise the value of the quantities of the items in the Schedule of Works completed.
	24.4	The value of work executed shall include the valuation of Variations, Certified Dayworks and Compensation Events.
	24.5	The Engineer may exclude any item certified in previous certificates or reduce the proportion of any item previously certified in any certificate in the light of later information.
25. Payments and Currency	25.1	The Employer shall pay the Contractor the amounts certified by the Engineer within thirty (30) days of the date of each certificate.
	25.2	The Employer shall make Advance Payment (mobilization and secured advance) to the Contractor of the amounts and by the dates stated in the SCC

		against provision by the Contractor of an unconditional Bank Guarantee, (Form 4).
	25.3	The Contractor is to use the advance payment only to pay for Equipment, Plant, Materials, and mobilisation expenses required specifically for the execution of the Contract. The Contractor shall demonstrate that the advance payment has been used in this way by submitting copies of invoices or other documents to the Employer.
	25.4	The advance payment shall be repaid by deducting proportionate amounts from payments otherwise due to the Contractor, following the schedule of completed percentages of the Works on a payment basis. No account shall be taken of the advance payment or its repayment in assessing valuations of work done, variations, claims or any amount payable due to failure to complete the works.
26. Retention	26.1	The Employer shall retain from each payment due to the Contractor the proportion stated in the SCC until the completion of the whole of the Works.
	26.2	On completion of the whole of the Works, half the total amount retained shall be repaid to the Contractor, the remaining half when the Defects Liability Period has passed and the Engineer has certified that all Defects notified by the Engineer to the Contractor before the end of this period have been corrected.
27. Liquidated Damages	27.1	The Contractor shall pay liquidated damages to the Employer at the rate per day stated in the SCC for each day that the Completion Date is later than the Intended Completion date for the works or for any part thereof.
28. Performance Security	28.1	Upon Notification of Award, a Performance Security shall be provided to the Employer in the amount and form stated in the Contract Forms (Form 3). The Performance Security shall be valid until a date thirty (30) days from the date of issue of the Certificate of Completion.
29. Price Adjustment	29.1	The rates and prices in the bill of quantities are fixed for the duration of the Contract and not subject to price adjustment during the performance of the Contract.
30. Completion	30.1	The Contractor shall request the Engineer to issue a Certificate of Completion of the Works, and the Engineer will do so upon deciding that the work is substantially completed.
31. Correction of Defects	31.1	The Engineer shall give notice to the Contractor of any Defects before the end of the Defects Liability Period, which begins at Completion, and is defined in the SCC. The Defects Liability Period shall be extended for as long as the Defects remain to be corrected.
	31.2	If the Contractor has not corrected a Defect within the time specified in the Engineer's notice, the Engineer will assess the cost of having the Defect corrected, and the Contractor will pay this amount.
32. Taking Over	32.1	The Employer shall take over the Site and the Works within seven (7) days of the Engineer issuing a Certificate of Completion.
33. Final Account	33.1	The Contractor shall supply the Engineer a detailed account of the total amount that the Contractor considers payable under the Contract. The Engineer shall certify any final payment that is due to the Contractor within twenty-one (21) days of receiving the Contractor's account if it is correct and complete.
	33.2	The Employer shall effect payment of the final account within thirty (30) days from the date of certification by the Engineer.

34. Termination
- 34.1 The Employer or the Contractor by giving thirty (30) days written notice of default to the other party, may terminate the Contract in whole or in part if the other party causes a fundamental breach of Contract.
- 34.2 Fundamental breaches of the Contract shall include, but shall not be limited to, the following:
- (a) the Contractor stops work for more than thirty (30) days when no stoppage of work is shown on the current Programme and the stoppage has not been authorised by the Engineer;
 - (b) the Engineer gives notice that failure to correct a particular defect is a fundamental breach of Contract and the Contractor fails to correct it within a reasonable period of time determined by the Engineer;
 - (c) the Contractor has delayed the completion of the Works by the number of days for which the maximum amount of Liquidated Damages can be paid;
 - (d) the Contractor, in the judgment of the Employer, has engaged in corrupt or fraudulent practices, as defined in GCC Clause 3, in competing for or in executing the Contract; and
 - (e) a payment certified by the Engineer is not paid to the Contractor by the Employer within sixty (60) days of the date of the Engineer's certificate.
- 34.3 The Employer and the Contractor may at any time terminate the Contract by giving notice to the other party if either of the parties becomes bankrupt or otherwise insolvent. In such event, termination will be without compensation to any party provided that such termination will not prejudice or affect any right of action or remedy that has accrued or will accrue to the other party.
- 34.4 Notwithstanding the above, the Employer may terminate the Contract for convenience.
- 34.5 If the Contract is terminated, the Contractor is to stop work immediately, make the Site safe and secure and hand over the Site to the Employer as soon as reasonably possible.
35. Payment upon Termination
- 35.1 If the Contract is terminated because of a fundamental breach of Contract by the Contractor, the Engineer shall issue a certificate for the value of the work done and Plant and Materials ordered less advance payments received up to the date of the issue of the certificate and less the percentage to apply to the value of the work not completed, as indicated in the SCC.. Additional Liquidated Damages shall not apply. If the total amount due to the Employer exceeds any payment due to the Contractor, the difference shall be a debt payable to the Employer.
- 35.2 If the Contract is terminated for the Employer's convenience or because of a fundamental breach of Contract by the Employer, the Contractor shall be entitled to payments for completed works and the materials that have been brought to the site for the purpose of the works, but not used as certified by the Engineer after adjusting any payments received by the Contractor.
36. Release from Performance
- 36.1 If the Contract is frustrated by the outbreak of war or by any other event entirely outside the control of either the Employer or the Contractor, the Engineer shall certify that the Contract has been frustrated. The Contractor shall make the Site safe and stop work as quickly as possible, after receiving this certificate. The Contractor shall be paid for all works carried out before stoppage of work and any work carried out afterwards to which a commitment was made.
37. Force Majeure
- 37.1 For the purposes of this Contract, "Force Majeure" means an exceptional event or circumstance:
- (a) which is beyond a Party's control,
 - (b) which such Party could not reasonably have provided against before

- entering into the Contract,
- (c) which, having arisen, such Party could not reasonably have avoided or overcome, and
- (d) which is not substantially attributable to the other Party.

37.2 Force Majeure may include, but is not limited to, exceptional events or circumstances of the kind listed below, so long as conditions (a) to (d) above are satisfied:

- (a) war, hostilities (whether war be declared or not), invasion, act of foreign enemies,
- (b) rebellion, terrorism, sabotage by persons other than the Contractor's Personnel, revolution, insurrection, military or usurped power, or civil war,
- (c) riot, commotion, disorder, strike or lockout by persons other than the Contractor's Personnel,
- (d) munitions of war, explosive materials, ionizing radiation or contamination by radio-activity, except as may be attributable to the Contractor's use of such munitions, explosives, radiation or radio-activity, and
- (e) natural catastrophes such as earthquake, hurricane, typhoon or volcanic activity.

37.3 However, force majeure shall not include the following;

- i. rainfall
- ii. snowfall
- iii. strikes in other countries
- iv. non-availability of labourer and materials such as timbers, boulders, sand, and other materials
- v. difficulty and risky terrain and remoteness of site.

38. Settlement of Disputes

- 38.1 The Employer and the Contractor shall use their best efforts to settle amicably all disputes arising out of or in connection with this Contract or its interpretation.
- 38.2 Any dispute between the parties to the Contract that may not be settled amicably will be referred to Arbitration at the initiative of either of the parties.
- 38.3 The Arbitration shall be conducted in accordance with the Arbitration Rules of the Kingdom of Bhutan in force.

Section 6. Special Conditions of Contract

Instructions for completing the Special Conditions of Contract are provided, as needed, in the notes in italics mentioned for the relevant GCC Clauses.3

Clause Ref	Amendments of, and Supplements to, Clauses in the General Conditions of Contract
GCC 1.1(d)	The Contractor is <i>[name, address and name of authorised representative]</i> .
GCC 1.1(i)	The Employer is:- Gup, Gewog Administration, Mendrelgang, Tsirang
GCC 1.1(j)	The Site Engineer is <i>[Kencho Tshering-mob-17817558]</i> .
GCC 1.1(k)	The Intended Completion Date for the whole of the Works shall be <i>[5 months]</i> .
GCC 1.1(l)	The Site is located at <i>[Mendrelgang gewog, Tsirang]</i>
GCC 1.1(m)	The Works are <i>[const. of kitchen cum store, site development and wiring)</i> Note: Site visit is necessary before fill up the tender document.
GCC 2.2(i)	The additional documents forming part of this Contract are: <i>[None]</i>
GCC 4.1	The Language governing the Contract shall be <i>[English.]</i> <i>[English].</i>
GCC 5.1	The Engineer shall obtain specific approval of the Employer before taking any of the following actions: <ul style="list-style-type: none"> • Additional work • Change in design & specification • Site location
GCC 7.1	The addresses for Communications shall be: <u>For the Employer:</u> Gup, Gewog Administration, Mendrelgang Tsirang <i>[insert name, address and contact details]</i> <u>For the Contractor:</u> <i>[insert name, address and contact details].</i>
GCC 9.1	The Key Personnel of the Contractor are: <i>[N/A]</i>
GCC 15.1	For insurance purposes the type of cover required shall be: The contractor shall be responsible for the insurance <i>[modify as appropriate]</i>
GCC 16.1	Possession of the site shall be within [5] days from the date of signing of the Contract.
GCC 17.1	Commencement of work shall be within 7 days. However, the actual start date of contract duration shall be indicated in the 'Letter of Acceptance'
GCC 18.1	Completion of works shall be within Completion of works from the date of commencing the works on the site shall be within the date as indicated in the 'Letter of Acceptance'

GCC 19.1 & 19.2	The Contractor should submit the work plan at the time of signing the Contract, and shall update the work plan every [4] weeks during the period of the Contract.
GCC 22.1	<i>[Enter here the agreed rates for non-scheduled items of work if known, if not known then make the statement "The rates for non-scheduled items of works shall be determined by the Engineer".</i>
GCC 25.2	An advance payment of [10] % of the Contract Price will be made to the Contractor within (14) days of Contract signing date.
GCC 26.1	The Retention shall be [10] % of the final contract Price.
GCC 27.1	<p>The liquidated damages for the whole of the Works are [0.05 %] per day.</p> <p>The maximum amount of liquidated damages for the whole of the Works is [10 %] percent of the Final Contract Price.</p> <p><i>[usually, liquidated damages are set between 0.05 percent to 0.10 percent per day and the total amount is not to exceed 10 percent of the Contract Price.]</i></p>
GCC 31.1	The Defects Liability Period shall be [1] (one year).
GCC 35.1	The percentage to apply to the value of the work not completed, representing the Employer's additional cost for completing the Works, is <i>[percent, it is generally 20% of the value of work not completed up to a maximum of 10% of the initial contract price]</i>
GCC 36.1	<p>The lowest evaluated bidder whose bid is considered abnormally low or unbalanced, following prescribed evaluation procedures, the bids shall be required to provide differential security in the form of "cash warrant" in addition to performance security. The cash warrant shall be valid for at least 6 months, and thereafter can be converted into bank guarantee. The payment has to be made within 15 working days after receipt of the letter of acceptance by the bidder.</p> <p>The additional security amount to be provided by the bidders, in the form of cash warrant shall be the difference between departmentally estimated amount and the amount quoted by the successful bidder less 20% of the departmentally estimated amount</p>

Section 7 – Contract Forms

This section contains forms which, once completed, will form part of the Contract. The forms for Performance Security and Advance Payment Security, when required, shall only be completed by the successful Bidder after Contract award.

Contract Forms

Form	Title
Form -1	Notification of Award
Form -2	Contract Agreement
Form -3	Bank Guarantee for Performance Security
Form -4	Bank Guarantee for Advance Payment

Notification of Award

Contract No:

Date:

To:

[name and address of Contractor]

This is to notify you that your Bid dated *[insert date]* for the execution of the Works for *[name of project / Contract]* for the Contract Price of Nu *[amount in figures and in words]*, as corrected and modified in accordance with the Instructions to bidder is hereby accepted by *[name of the Employer]*.

You are requested to proceed with the execution of the Works on the basis that this Notification of Award shall constitute the formation of a Contract, which shall become binding upon you furnishing a Performance Security within fourteen (14) days, in accordance with ITB Clause 32, and the signing the Contract Agreement within twenty-one (21) days, in accordance with ITB Clause 33.

We attach the Contract Agreement and Special Conditions of Contract for your perusal and signature.

Signed

Duly authorised to sign for and on behalf of
[name of Procuring Entity]

Date:

Contract Agreement

THIS AGREEMENT, made the [day] of [month] [year] between [name and address of Employer] (hereinafter called "the Employer") of the one part and [name and address of Contractor] (hereinafter called "the Contractor") of the other part.

WHEREAS, the Employer invited Tenders for certain Works, viz, [brief description of the Works] and has accepted a Tender by the Contractor for the execution of those works in the sum of Ngultrum [insert amount in figures and words], hereinafter called "the Contract Price.

NOW THIS AGREEMENT WITNESSETH as follows:

1. In this Agreement, words and expressions shall have the same meanings as are respectively assigned to them in the General Conditions of Contract hereinafter referred to.
2. The documents forming the Contract shall be interpreted in the following order of priority:
 - (a) The signed Contract Agreement;
 - (b) The letter of Acceptance;
 - (c) The completed Bid form as submitted by the Bidder;
 - (d) The Special Conditions of Contract;
 - (e) The General Conditions of Contract;
 - (f) Specifications
 - (g) The Drawings; and
 - (h) Any other document listed in the SCC as forming part of the Contract..
3. In consideration of the payments to be made by the Employer to the Contractor as hereinafter mentioned, the Contractor hereby covenants with the Employer to execute and complete the Works and to remedy any defects therein in conformity in all respects with the provisions of the Contract.
4. The Employer hereby covenants to pay the Contractor in consideration of the execution and completion of the Works and the remedying of defects therein, the Contract Price or such other sum as may become payable under the provisions of the Contract at the times and in the manner prescribed by the Contract.

IN WITNESS whereof the Parties thereto have caused this Agreement to be executed in accordance with the laws of Bhutan on the day month and year first before written.

For the Employer

For the Contractor

Signature

Print Name

Title

In the presence of
(Name)

Address

Bank Guarantee for Performance Security

[this is the format for the Performance Security to be issued by any financial institute in Bhutan in accordance with ITB Clause 35]

Contract No:

Date:

To:

[Name and address of Employer]

PERFORMANCE GUARANTEE No:

We have been informed that *[name of Contractor]* (hereinafter called "the Contractor") has undertaken, pursuant to Contract No *[reference number of Contract]* dated *[date of Contract]* (hereinafter called "the Contract"), the execution of works *[description of works]* under the Contract.

Furthermore, we understand that, according to your conditions, Contracts must be supported by a performance guarantee.

At the request of the Contractor, we *[name of bank]* hereby irrevocably undertake to pay you, without cavil or argument, any sum or sums not exceeding in total an amount of Nu *[insert amount in figures and in words]* upon receipt by us of your first written demand accompanied by a written statement that the Contractor is in breach of its obligation(s) under the Contract conditions, without you needing to prove or show grounds or reasons for your demand of the sum specified therein.

This guarantee is valid until *[date of validity of guarantee]*, consequently, we must receive at the above-mentioned office any demand for payment under this guarantee on or before that date.

Signature

Signature

Bank Guarantee for mobilisation advance

[this is the format for the Advance Payment Guarantee to be issued by a financial institution in Bhutan in their letter pad in accordance with SCC Clause 25.2]

Contract No:

Date:

To:

[Name and address of Employer]

ADVANCE PAYMENT GUARANTEE No:

We have been informed that *[name of Contractor]* (hereinafter called “the Contractor”) has undertaken, pursuant to Contract No *[reference number of Contract]* dated *[date of Contract]* (hereinafter called “the Contract”), the execution of works *[description of works]* under the Contract.

Furthermore, we understand that, according to your conditions, Advance Payments must be supported by a bank guarantee.

At the request of the Contractor, we *[name of bank]* hereby irrevocably undertake to pay you, without cavil or argument, any sum or sums not exceeding in total an amount of Nu. *[insert amount in figures and in words]* upon receipt by us of your first written demand accompanied by a written statement that the Contractor is in breach of its obligation(s) under the Contract conditions, without you needing to prove or show grounds or reasons for your demand of the sum specified therein.

We further agree that no change, addition or other modification of the terms of the Contract to be performed, or of any of the Contract documents which may be made between the Employer and the Contractor, shall in any way release us from any liability under this guarantee, and we hereby waive notice of any such change, addition or modification.

This guarantee is valid until *[date of validity of guarantee]*, consequently, we must receive at the above-mentioned office any demand for payment under this guarantee on or before that date.

Signature

Signature

Section 8 Bill of Quantities (BoQ)

Work :Construction of Kitchen cum Store
Gewog :Mendrelgang gewog
Location :Near Mendrelgang Lhakhang
Dzongkhag : Tsirang
Title : Bill of Quantity

N o	BSR Code	Description of item	Qty	UoM	Rate in Figure	Rate in Words	Amount
1	CG00 02	Clearing jungle including uprooting of vegetation & trees of girth < 300mm & disposal within 50m of the site	120.00	sq.m			
2	EW0 030	Earth work in excavation over areas, depth >300mm, width >1.5m, area >10 Sq.m on plan, including disposal of excavated earth within 50m lead and 1.5m lift & disposed soil to be neatly dressed. Ordinary Soil	66.00	cu.m			
3	EW0 105	Excavation in foundation trenches or drains not exceeding 1.5m in width or area 10 sq.m on plan, including dressing & ramming, disposal of surplus soil within 50m lead & 1.5m lift :Ordinary soil	26.42	cu.m			
4	EW0 033	Earth work in excavation over areas, depth >300mm, width >1.5m, area >10 Sq.m on plan, including disposal of excavated earth within 50m lead and 1.5m lift & disposed soil to be neatly dressed. Hard rock requiring blasting(Provision item)	7.20	cu.m			
5	EW0 195	Filling of trenches, sides of foundations etc. in layers <200mm using selected excavated earth, ramming etc, within lead 50m & lift 1.5m	23.6	cu.m			
6	SM00 72	Providing and laying Hand packed stone filling or soling with stones	16.83	cu.m			
7	CW0 008	Providing and laying in position plain cement concrete excluding the cost of centering and shuttering - All work upto plinth level: 1:4:8 (1 cement:4 sand:8 graded gravel/shingles 40mm nominal size)	10.14	cu.m			
8	SM00 07	Providing & laying Random Rubble Masonry with hard stone in foundation & plinth :In cement mortar 1:6	21.14	cu.m			

9	BW003	Providing & laying Second-Class Brick work in Foundation & Plinth In cement mortar 1:5	33.30	cum			
10	BW0021	Providing & laying Second-Class Half-brick Masonry (125 mm) in superstructure below floor 2 level In cement mortar 1:4	0.50	sqm			
		Steel works					
11	RC0083	Providing & fixing Thermo-Mechanically Treated reinforcement bar (Yield Strength 500 MPa) for R.C.C work including cutting, bending, binding and placing in position complete	6237.56	kg			
12	RC0002	Providing & laying in position reinforced cement concrete excluding the cost of centering, shuttering and reinforcement - all work 1:1.5:3 (1 cement : 1.5 sand : 3 graded crushed rock 20 mm nominal upto plinth level size)	16.03	cum			
13	RC0090	Providing & fixing centering and shuttering (formwork), including strutting, propping etc. and removal of formwork Foundation and plinth etc.	156.58	sqm			
14	RC0010	Providing & laying in position reinforced cement concrete work in plinth and skirting courses, fillets, columns, pillars, posts and struts upto floor five level excluding the cost of centering, shuttering and reinforcement. 1:1.5:3 (1 cement : 1.5 sand : 3 graded crushed rock 20 mm nominal size)	5.47	cu.m			
15	RC0093	Providing & fixing centering and shuttering (formwork), including strutting, propping etc. and removal of formwork. Columns, pillars, post, struts etc.	288.00	sqm			
16	RC0014	Providing & laying in position reinforced cement concrete work in suspended floor, roofs having slope upto 15o, landings, balconies, shelves and chajjas upto floor five level excluding the cost of centering, shuttering and reinforcement. 1:1.5:3 (1 cement : 1.5 sand : 3 graded crushed rock 20 mm nominal size)	10.28	cu.m			

17	RC00 95	Providing & fixing centering and shuttering (formwork), including strutting, propping etc. and removal of formwork. Suspended floor, roof, landing, shelves and their supports, balconies, chajjas, etc	74.31	sqm			
18	RC00 31	Bhutan type Traditional Cornices in R.C.C 1:1.5:3, 20 mm aggregate including cost of formwork including finishing with 6mm thick plaster on the exposed surface with cement mortar 1:3, excluding reinforcement & decorative painting cost as per standard design (Measurement to be taken along the cornice and wall junction) Chachu kha nim	36.00	m			
19	RC00 34	Bhutan type Traditional Cornices in R.C.C 1:1.5:3, 20 mm aggregate including cost of formwork including finishing with 6mm thick plaster on the exposed surface with cement mortar 1:3, excluding reinforcement & decorative painting cost as per standard design (Measurement to be taken along the cornice and wall junction) Lintel Cornice window	32.20	m			
20	WW0 037	Providing, making & fixing woodwork dressed in traditional cornices complete as per standard design in Mixed Conifer, including applying wood preservative on unexposed surfaces, excluding decorative painting (Measurement to be taken along the cornice and wall junction line) For single-storied structure including phana	36.00	m			
21	WW0 021	Providing & fixing joists, including hoisting, applying wood preservative on unexposed surfaces : Mixed Conifer	0.79	cu.m			
22	WW0 003	Providing & fixing in position dressed wood work in frames of doors, windows, clerestory windows and other frames, wrought and framed: Mixed Conifer	1.73	cu.m			

23	WW0 037	Providing, making & fixing woodwork dressed in traditional cornices complete as per standard design in Mixed Conifer, including applying wood preservative on unexposed surfaces, excluding decorative painting (Measurement to be taken along the cornice and wall junction line):For single-storied structure including phana	36.00	m			
24	WW0 060	Providing & fixing roof framing, in trusses, purlins, rafters, posts, post plates including hoisting, etc (excluding steel items) :Mixed Conifer	4.79	cu.m			
25	FL00 51	P&l cement concrete flooring 1:2:4, finished with floating coat of neat cement :20mm aggregates, 40mm thick	8.24	sq.m			
		FLOORING					
26	FL00 86	Providing & laying 40mm thick marble chips flooring top layer 6mm thick with white, black or black and white marble chips of nominal size 1.5-3mm in proportion 1:2 (cement: chips), on 34mm thick concrete base in cement concrete 1:2:4, 12.5mm aggregate (cement and marble powder mix shall be of the ratio 3 part of cement to 1 part of marble powder) In white cement	79.76	sq.m			
	FL01 15	Extra for Providing & fixing glass strips in joints of terrazzo floors	153.78	sq.m			
27	FL01 41	Providing & fixing Terrazzo or Marble chips skirting < 300mm height top layer 6mm thick with white or black, black and white marble chips size 4mm in proportion 1:2, laid on 12.5mm thick cement plaster 1:3 base In white cement	47.14	sq.m			
28	FL02 01	Providing & fixing Mixed Conifer Flooring including fixing with iron screws etc. complete, excluding the cost of frame: 25mm thick, 25mm thick half lapped.	72.00	sq.m			
29	WW0 030	Providing and fixing eaves board (225x25mm) with moulding fitted and fixed with necessary screws: Mixed Conifer	47.70	m			

30	WW0 221	Providing & fixing 35mm thick Panelled or glazed doors and windows Shutters etc. complete including hinges: Mixed Conifer	37.25	sq.m			
31	RF00 03	Providing & fixing Pre Painted Steel Corrugated Roofing sheets, including bolts, hooks and nuts 8mm dia. with bitumen and G.I limpet washers filled with white lead for connection, excluding the cost of purlins, rafter and trusses. 25g (0.50mm)	133.65	sq.m			
32	RF00 07	Providing & fixing 600mm ridges or hips in Pre Painted Steel sheets, including bolts, hooks and nuts 8mm dia G.I limpet and bitumen washers for connection. 25g. (0.50mm)	31.29	m			
33	SW00 90	Providing, making and fixing M.S. straps, flats, sole plates etc.	17.38	kg			
34	SW00 80	Providing & fixing M.S. round hold-down bolts with nuts and washer plates	7.48	kg			
35	PL00 21	Providing & laying 12mm cement plaster C.M 1:4	137.39	sq.m			
36	PL00 95	Cement Lime Plaster 12 mm cement lime plaster of mix on fair side of brick work - 1:1:6 (1 cement :1 lime : 6 sand) finished even and smooth and curing etc. complete	183.62	sq.m			
37	PT00 42	Providing and applying finishing coats - Acrylic washable distemper, two coats on new work, including cement primer coat	321.01	sqm			
38	WW0 132	Providing & fixing Plywood lining with necessary nails etc. including beading complete (excluding cost of frame) 6 mm, commercial	63.25	sqm			
39	WW0 516	Providing & fixing 150x12mm, with 25mm dia. wooden curtain rod and brackets including M.S flats 25x3x100mm and plugs etc. complete Mixed Conifer	30.15	m			
40	WW0 557	Providing & fixing M.S. handle with necessary screws etc. complete :100mm	21.00	each			
41	WW0 556	Providing & fixing M.S. handle with necessary screws etc. complete :125mm	6.00	each			

42	WW0 546	Providing & fixing M.S. sliding door bolt, bright finished, enamelled with necessary screws etc. complete :250mm	3.00	each			
43	WW0 537	Providing & fixing M.S. tower bolt (barrel type) with necessary screws etc. complete :100mm	55.00	each			
44	WW0 567	Providing & fixing M.S. hook-and-eye with necessary screws etc. complete :150mm	23.00	each			
45	WW0 325	Providing & fixing M.S. round or square bars in window frames	178.30	kg			
46	PI000 3	Providing & fixing G.I. pipes including G.I. fittings & clamps & repair walls. 25mm	20.00	m			
47	PI001 1	Providing & fixing H.D.P.E pipes including clamps & repair walls etc. complete. 25mm	15.00	m			
48	PI020 5	Providing & fixing c.p. brass bibcock	3.00	each			
49	PI008 7	Providing & fixing white vitreous china wash basin, including C.I brackets, 15mm C.P. brass pillar taps, c.p. chain & rubber plug, 32mm pvc waste, 32mm dia. trap & union, repair walls Flat back wash basin 550x400mm with a pair of 15mm c.p.	1.00	each			
50	PI004 0	Providing & fixing Indian-type vitreous china w.c squatting pan, including 100 mm H.C.I P or S trap, 10 lit low level vitreous china cistern & fittings, repair walls 500mm, white	1.00	each			
51	PI006 0	Providing & fixing white vitreous china foot rests 250x130x30mm) for Indian W.C	2.00	pair			
52	WW0 630	Providing & fixing anodised aluminium kicking plate, 4mm thick with necessary aluminium screws etc. complete	1.02	sqm			
53	AR	Providing & fixing railing with 50mm top rails, 25x25mm hollow bars including 2 coats of aluminium paint and primer all complete as per drawing	580.60	kg			
54	AR	Providing and fixing PVC semi gutter 180mm dia. including fitting, clamps etc complete	47.70	m			

55	RF01 92	Providing and fixing on wall face single socketed rigid PVC (Working Pressure 4kgf per sq.cm) rain water pipes including jointing with seal ring leaving 10 mm gap for thermal expansion- complete.110mmdia	10.00	M			
56	PO03 70	Providing & fixing P.V.C soil waste and vent pipes, single or double socketed, including pipe clip complete (excluding the cost of PVC fittings) 75mm dia	30.00	m			
57	PO04 05	Providing & fixing P.V.C plain bend 75mm	3.00	each			
58	PO04 07	Providing & fixing P.V.C plain bend 110mm	3.00	each			
	PO04 15	Providing & fixing P.V.C door bend 75mm dia	1.00	each			
59	PO06 11	Constructing Septic Tanks, in R.R Masonry in cement mortar 1:6, including fittings, C.I cover with frame, 40mm thick concrete flooring (40mm aggregates) cement plaster concrete base in C.C 1:4:8 etc. complete as per standard design 25 users	1.00	each			
60	PO06 00	Constructing Soak Pit Size 1200x1200x1200mm, filled with brick bats including 100mm SW drain pipe X 1200mm long	1.00	each			
61	PT00 91	Providing, preparing and applying Sumdang painting including bhutanese flower wherever necessary(Not washable) Ding	136.34	sq.m			
62	PT00 47	Providing and applying finishing coats Synthetic enamel, for steel & wood work, two coats on new work	128.80	sq.m			
63	DR00 01	Providing and laying 50mm thick Plinth Protection and grouted with fine sand mix including well rammed, finishing the top smooth :With cement concrete 1:3:6, 20mm aggregates, laid over 75mm thick layer of compacted gravel (40mm)	43.67	sq.m			

64	DR00 31	Constructing random rubble masonry open surface drain in cement mortar 1:6 including earth work in excavation, 100mm thick concrete base 1:5:10, 40mm aggregate 25mm thick cement concrete 1:2:4, 12.5mm aggregate for filling haunches, including 20mm cement plaster with floating coat of neat cement, disposal of surplus earth: 150x200mm depth	42.85	m			
		Site development wall					
1	CG00 02	Clearing jungle including uprooting of vegetation & trees of girth < 300mm, disposal within 50m of the site	49.6	sqm			
2	EW0 030	Earth work in excavation over areas, depth >300mm, width >1.5m, area >10 Sq.m on plan, including disposal of excavated earth within 50m lead and 1.5m lift & disposed soil to be neatly dressed :Ordinary soil	100.8	cu.m			
3	EW0 105	Excavation in foundation trenches or drains not exceeding 1.5m in width or area 10 sq.m on plan, including dressing & ramming, disposal of surplus soil within 50m lead & 1.5m lift - Ordinary Soil	32.76	cum			
4	SM00 72	Providing and laying Hand packed stone filling or soling with stones	7.56	cu.m			
5	CW0 008	Providing and laying in position plain cement concrete excluding the cost of centering and shuttering - All work upto plinth level: 1:4:8 (1 cement:4 sand:8 graded crushed stone 40mm nominal size)	6.6	cu.m			
6	EW0 195	Filling of trenches, sides of foundations etc. in layers <200mm using selected excavated earth, ramming etc, within lead 50m & lift 1.5m	59.92	cu.m			
7	SM00 05	Providing & laying Random Rubble Masonry with hard stone in foundation & plinth :In cement mortar 1:4	151.26	cu.m			
8	PO00 50	Providing & laying H.D.P.E Pipes, 4 PN, including H.D.P.E fittings (excluding trenching, refilling & thrust block) 110mm	10	m			

9	L/S	Demolishing (Old kitchen cum store) cement concrete 1:4:8 & leaner, brick works, RRM in fdn, reinforced concrete, dismantling of doors and windows, timber trusses and cgi sheet with proper stacking of useful materials and disposal of unsue materials within 50m lead.	1.00	LS			
						Civil Total Nu:	
		WIRING					
1		Supplying and fixing of PVC & HDPE pipe on recessed including all accessories such as screws, bends, elbows, Tees, corners, etc. complete as required					
	CD02 20	20mm HDPE	139.00	mtr			
	CD02 24	40mm HDPE	9.00	mtr			
2		Provide & Draw Single Core 1.1KV grade PVC insulated copper conductor cable in existing HDPE concealed pipe					
	WC0 104	2x1.5 sq.mm	247.00	mtr			
	WC0 116	2x2.5 sq.mm	144.00	mtr			
	WC0 121	2x4 sq.mm	107.00	mtr			
	WC0 095	1x1sq.mm	107.00	mtr			
4		Supplying & fixing of modular metal boxes for switch/socket outlet/switch socket combined/ gang switches including base plate & cover plate etc as required (Roma Category A)					
	BX00 50	Modular metal box 1 way	1.00	each			
	BX00 51	Modular metal box 2 way	1.00	each			
	BX00 52	Modular metal box 3way <i>including power socket</i>	5.00	each			
	BX00 53	Modular metal box 4 way	4.00	each			
	BX00 54	Modular metal box 6 way	4.00	each			
5		Supplying & fixing of 10A switch on existing metal box (recessed or surface) including necessary cutting, connection testing etc. as required.PVC/metal / moulded tough (Roma Category A)					
	SS00 60	10A switch SP 1-way	35.00	each			

	SS00 75	Dimmer/regulator 300W	7.00	each			
	SS01 07	Ceiling Rose, 2 plate (PVC) 6A	28.00	each			
6		Supplying & fixing of socket outlet on existing PVC / metal/ moulded tough surface box/ metal box (recessed or surface) including necessary cutting, connection testing etc. as required (ROMA MAKE)					
	SS01 95	5/6-pin, 20A socket outlet, shuttered	5.00	each			
7		Supplying & fixing of switch/socket on existing PVC / metal/ moulded tough surface box, metal box (recessed or surface)/ junction box (PVC/metal) including necessary cutting, connection testing etc as required.					
	SS01 85	20A switch SP 1 way	5.00	each			
8		Supplying of prewired indoor fluorescent lamp luminaires housing of CRCA sheet steel rail, end with lamp holders,copper wound ballast, starter, starter holder, terminal block etc. but without lamp, LPF suitable for wall and ceiling					
	IL015 8	4' Strip Rail 36 watt	14.00	each			
9		Supplying of ceiling fan 240 volt A.C 1400 rpm with all accessories such as fan hook, down rod, sweep 3 Nos.,canopy 2 Nos.,condenser and fan body etc. complete as required					
	FN00 02	1200mm sweep	7.00	each			
11		Supplying & fixing on existing PVC/wooden / metal/ moulded tough surface box with fibre sheet cover,round block,junction box (recessed or surface) including necessary cutting, connection testing etc. as required.					
	SS02 30	Plain pendant holder with alumetic 2 core PVC wire cord grip	2.00	each			
	SS02 32	Angle holder (heavy duty, brass plunger)	7.00	each			

12		Supplying of prewired outdoor bulk head fittings luminaries having die cast aluminium body, prismatic heat resistant glass cover held in the weatherproof gasket, MS galvanised wire guard, etc. suitable for GLS, CFL & LED lamps for wattage upto 1x100/1x60 watts complete with all accessories such as base, holder, glass, reflector, louvered, etc. complete but without lamp					
	OL00 15	Projection 100mm, height 220mm, width 125mm, finish-painted, 1x60/100W	5.00	each			
14	LS00 27	LED 9 watts bulbs	14.00	each			
15		Supplying of fluorescent lamps 250 volts A.C					
	LS01 26	4' TL lamp 36 watt	14.00	each			
		POWER CABLE (Category A)					
16		Supplying of 2 Core 1.1KV grade PVC insulated and sheathed aluminium conductor armoured power cables: Finolex/Havells/ Nico makes					
	PC01 24	16 sq.mm 2 core armoured	67.00	mtr			
17		Laying of 1 number PVC insulated sheathed power cable copper/aluminium, armoured/un-armoured 1.1KV grade from single core to four core direct in the ground including excavation, sand cushioning, protective covering, and refilling the trenches etc. as required					
	CL00 02	Above 6sq.mm to 25sq.mm	51.00	mtr			
		CONTROL GEAR & BUS BAR					
20		Supply of miniature circuit breaker (MCB) single pole, 230 volt A.C complete with all accessories suitable to fix on a din-bar etc. as required Legrand/GE/L&T/ Merlin makes					
	GB02 70	SP MCB 6A	4.00	each			
	GB02 72	SP MCB 16A	5.00	each			

21		Supply of residual current circuit breaker (RCCB) 2 pole, 230 volt A.C complete with all accessories suitable to fix on a din-bar etc. as required: Legrand makes					
	GB04 28	ELCB/RCCB 40A 30mA	1.00	each			
22		Supply of miniature circuit breaker (MCB) DP, 230 volt A.C complete with all accessories suitable to fix on a din-bar etc. as required Legrand/GE/L&T/ Merlin makes					
	GB03 16	DP 40A	1.00	each			
23		Supply of SPN distribution board (DIN type) with metal door, 230 volt A.C complete with all accessories without MCB/isolator/RCCB out going or incoming etc. as required					
	GB05 19	16 way	1.00	each			
24		Providing & fixing of mixed conifer seasoned wood 650x500x230mm deep with locking arrangement and cover with chicken mess wire including all necessary required					
	MR	Wooden DB Box 650x 400x 150mm	1.00	each			
		Erection/installation					
25		Erection of all indoor/outdoor surface type wall bracket (single or double)/ surface ceiling fittings GLS lamps/ bulkhead GLS lamp / all types call bell / all type picture or mirror lighting luminaires fittings with all accessories, fixing of					
	EI000 2	1.5 sq.mm single core cable 1.1 KV grade	14.00	each			
26		Installation, testing and commissioning of prewired fluorescent fittings of all surface type complete with all accessories and tubes directly on ceiling/wall as required including connection with PVC insulated copper conductor					
	EI004 1	1.5 sq.mm single core cable 1.1 KV grade	14.00	each			

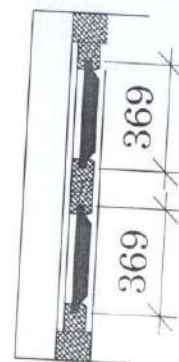
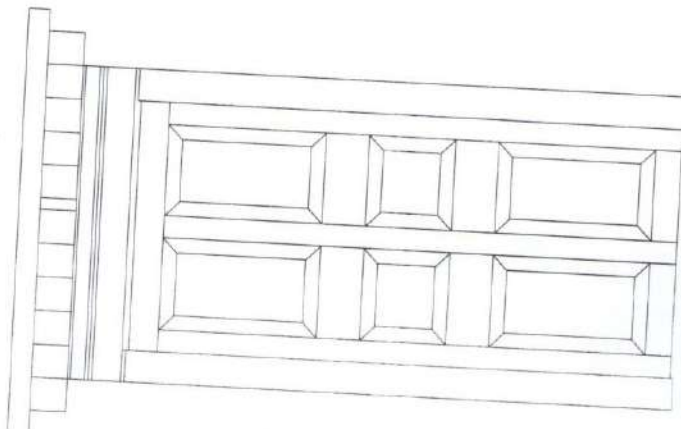
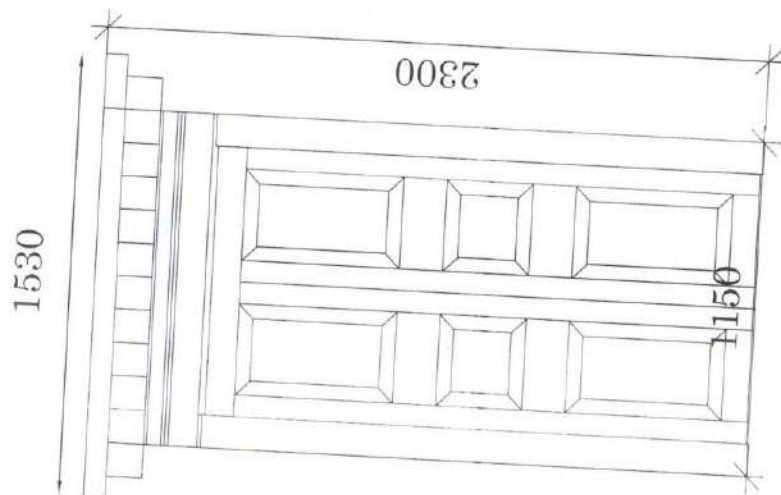
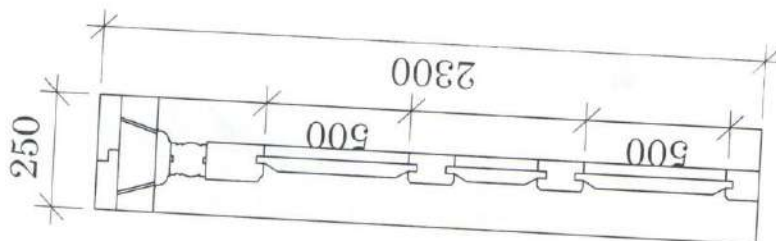
27		Installation, testing and commissioning of all size ceiling fan and regulator including wiring the down rod of standard length upto 300mm with PVC insulated copper conductor					
	EI009 6	1.5 sq.mm single core cable 1.1 KV grade	7.00	each			
32		Installation, testing and commissioning of SPN/DP miniature circuit breaker DIN type complete with all accessories to accommodate on/in prefabricated MS surface /MS cubical control panel board including drilling holes, connections etc as required					
	EI038 0	6/10/16/20A	9.00	each			
33		Installation, testing and commissioning of SPN/DP miniature circuit breaker/ RCCB/isolator DIN type complete with all accessories to accommodate on/in prefabricated MS surface /MS cubical control panel board including drilling holes, connections etc as required					
	EI039 0	25/32/40A	2.00	each			
34		Installation, testing and commissioning of SPN DB (DIN type, horizontal/vertical) with no door, metal door or arcylic door (double/single door) complete with all accessories to accommodate incoming RCCB DP 16/25A sensitivity 30/100/300mA and outgoing SP MCB 6/10/16A on/in prefabricated MS surface/MS cubical control panel board including drilling holes, connections etc. as required					
	EI051 6	16 way	1.00	each			
		Earthing					

35		Providing and fixing of earthing including all accessories, machinery enclosure, C.I cover plate having locking arrangement, watering pipe with excavation and refilling work including charcoal or coke and salt complete as required as per standard earthin					
	ET00 01	With G.I. earth plate 600x600x6mm	1.00	each			
36		Providing and laying of earth connection from electrode in 15mm dia GI pipe from earth electrode					
	ET00 15	with 4.06mm dia 8 SWG G.I. wire.	19.00	m			
37		Supplying and fixing of Digital Energy meter 20 -40 A from ESD recommendation including security money and thimble connection as required complete including IPC					
	MR	SP 10-60A Digital Energy Meter	1.00	set			
						Total Electrical Nu:	
					Total Civil and Electrical Nu:		

Section 9. Drawings

Notes on Drawings

Insert here a list of Drawings. The actual Drawings, including site plans, should be attached to this section or annexed in a separate folder. The Drawings shall be dated, numbered and show the revision number.



DOOR DETAIL

Name of Project: Const. of Kitchen cum Store

Location: Mendrelgang gewog

DZONGKHAG ADMINISTRATION, TSIRANG

DRAWN

CHECKED

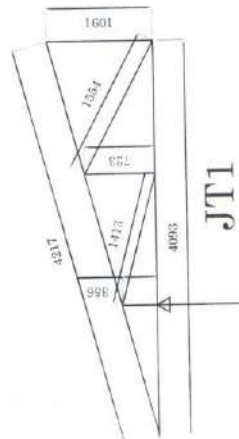
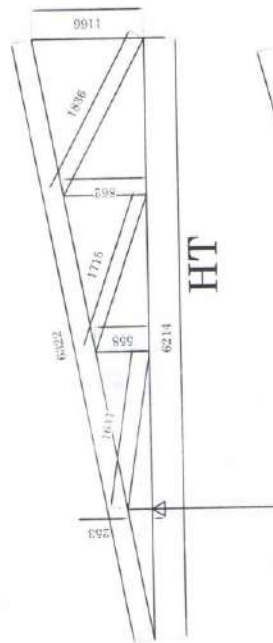
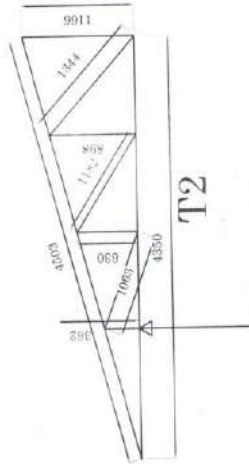
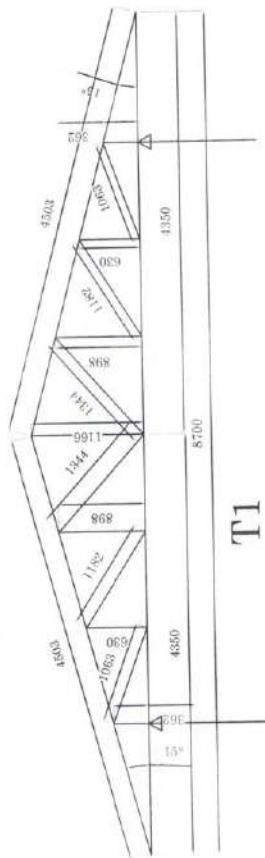
APPROVED

ALL DIMENSION ARE IN MM

Scale : 1:1

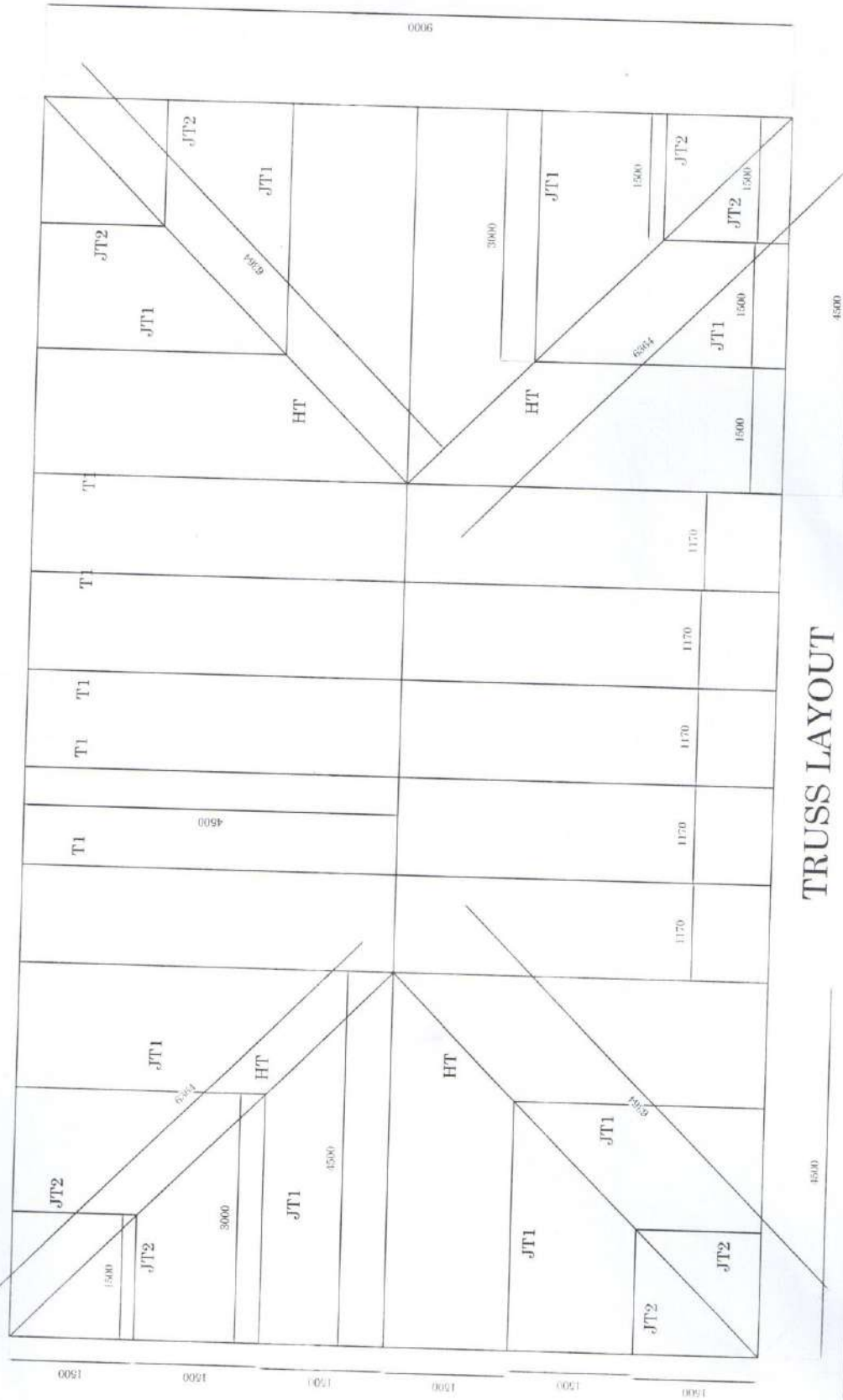


Date: 20.09.2018



Name of Project: Const. of Kitchen cum Store	DZONGKHAG ADMINISTRATION, TSIRANG			ALL DIMENSION ARE IN MM	
	DRAWN	CHECKED	APPROVED	Scale : 1:1	
Location: Mendrelgang gewog				Date: 20.09.2018	

14850



TRUSS LAYOUT

Name of Project: Const. of Kitchen cum Store

Location: Mendrelgang gewog

DZONGKHAG ADMINISTRATION, TSIRANG

DRAWN

CHECKED

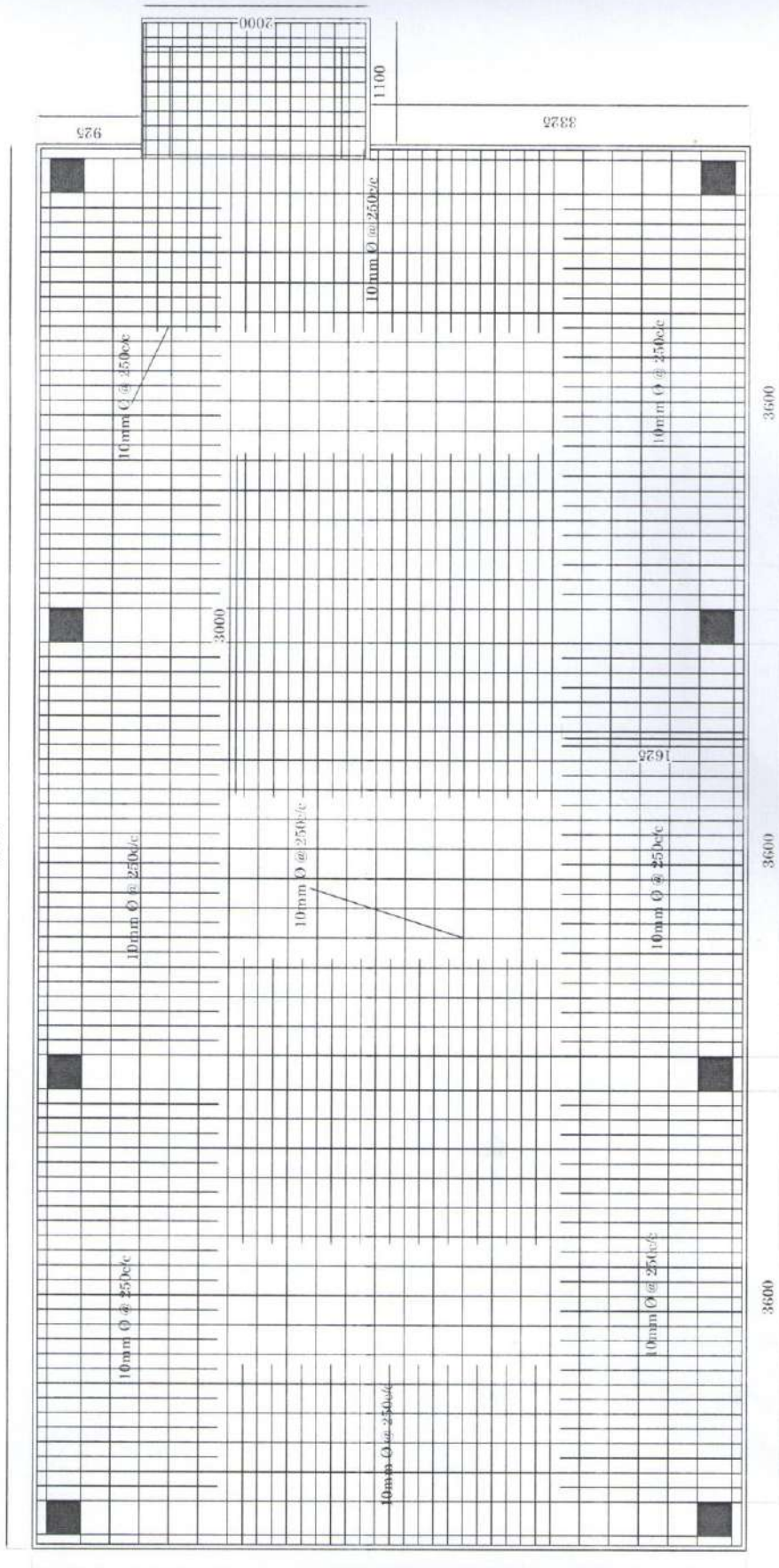
APPROVED

ALL DIMENSION ARE IN MM

Scale : 1:1

Date: 20.09.2018

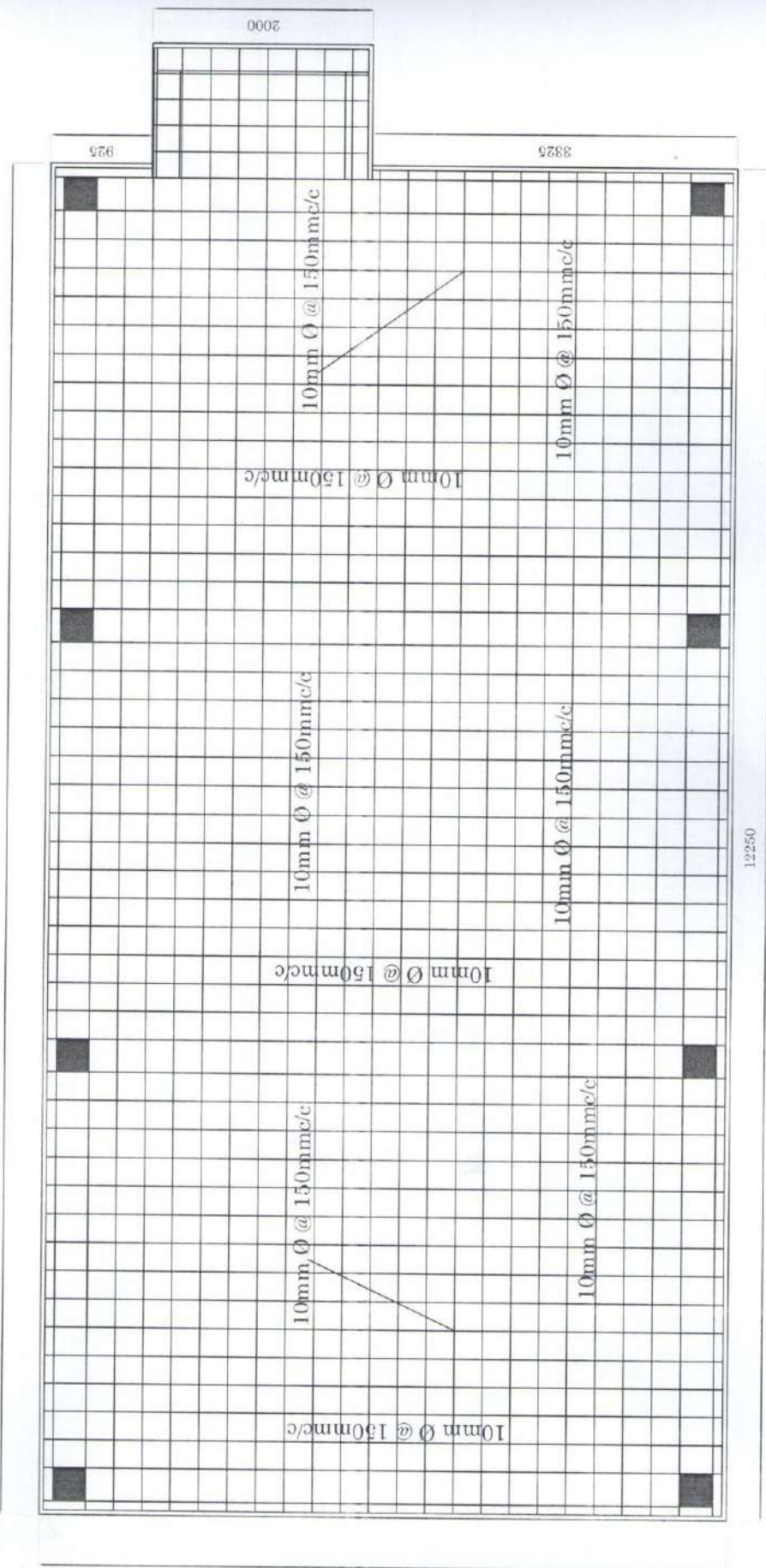
12250



SLAB TOP REINFORCEMENT BARS




Name of Project: Const. of Kitchen cum Store	DZONGKHAG ADMINISTRATION, TSIRANG		ALL DIMENSION ARE IN MM	
Location: Mendrelgang gewog	DRAWN	CHECKED	APPROVED	Scale : 1:1
				Date: 20.09.2018

12250



8950

SLAB BOTTOM REINFORCEMENT BARS

Name of Project: Const. of Kitchen cum Store	DZONGKHAG ADMINISTRATION, TSIRANG			ALL DIMENSION ARE IN MM	
	DRAWN	CHECKED	APPROVED	Scale : 1:1	
Location: Mendrelgang gewog				Date: 20.09.2018	

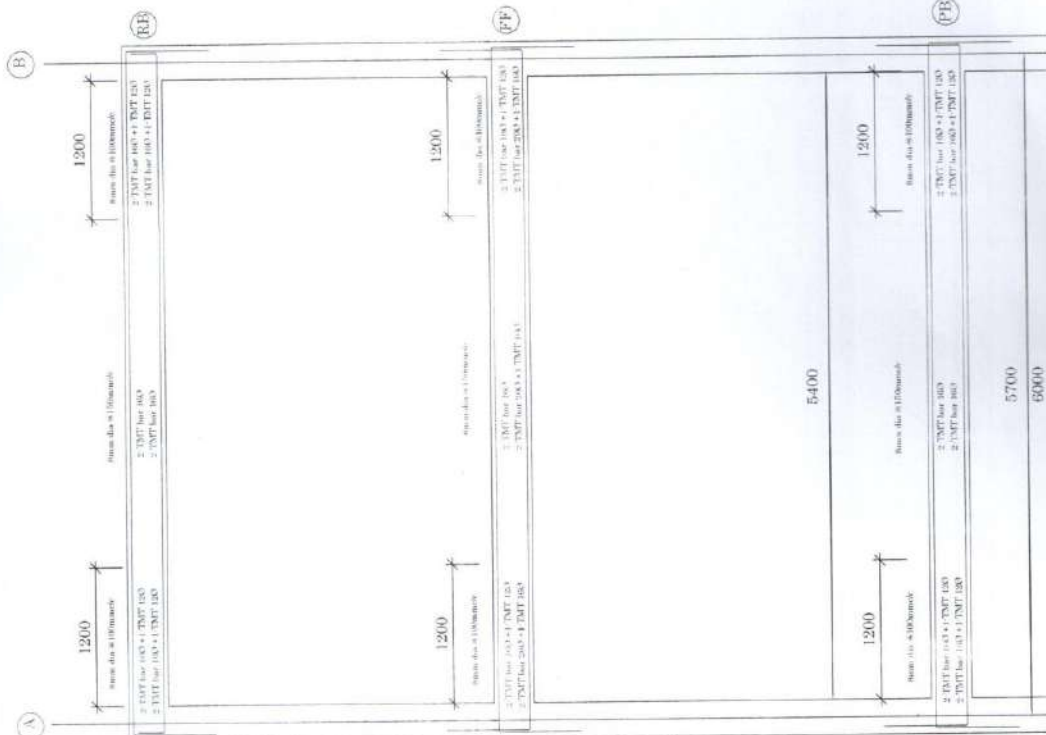


DZONGKHAG ADMINISTRATION, TSIRANG
DRAWN

Location: Mendrelgang gewog

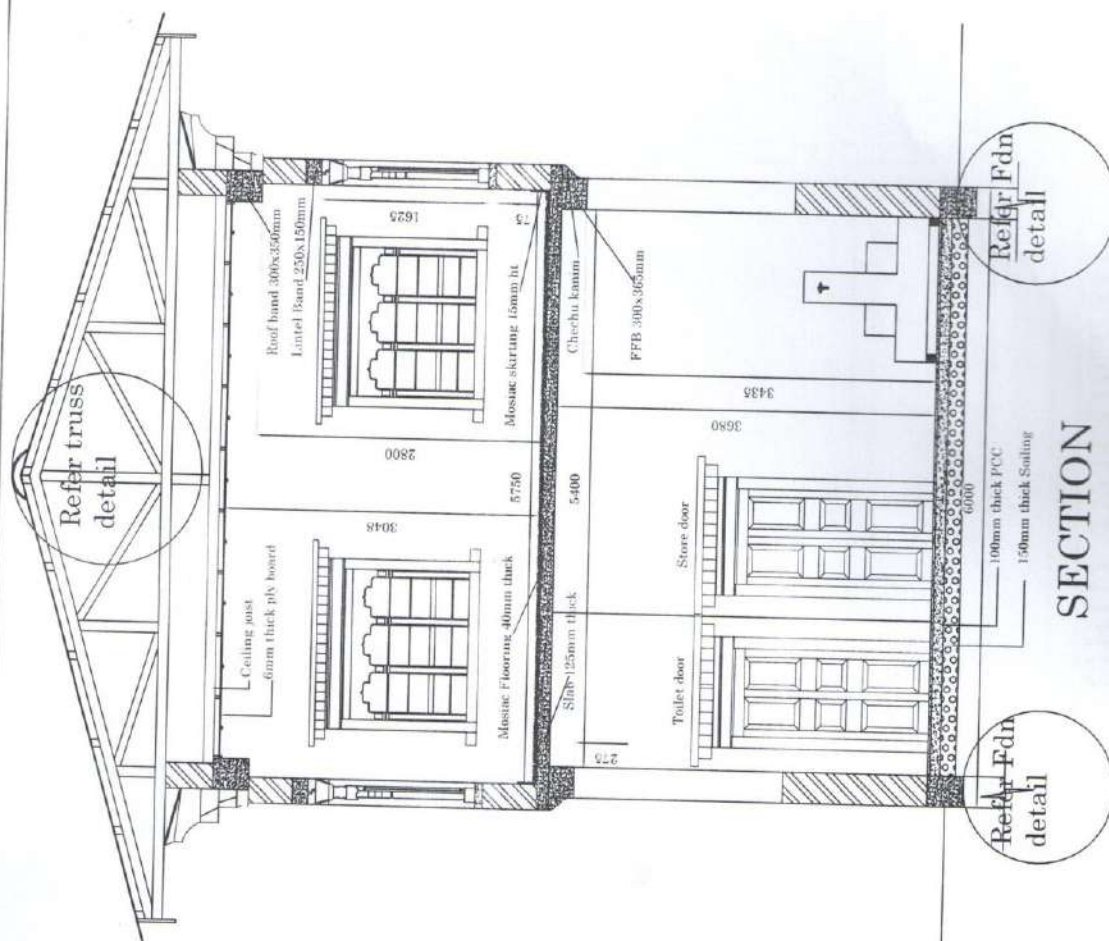
CHECKED	APPROVED
---------	----------

ALL DIMENSION ARE IN MM



GRID A&B DETAIL

Name of Project: Const. of Kitchen cum Store	DZONGKHAG ADMINISTRATION, TSIRANG		ALL DIMENSION ARE IN MM	
	DRAWN	CHECKED	APPROVED	Scale : 1:1
Location: Mendrelgang gewog			Date: 20.09.2018	



Name of Project: Const. of Kitchen cum Store

Location: Mendrelgang gewog

DZONGKHAG ADMINISTRATION, TSIRANG

DRAWN

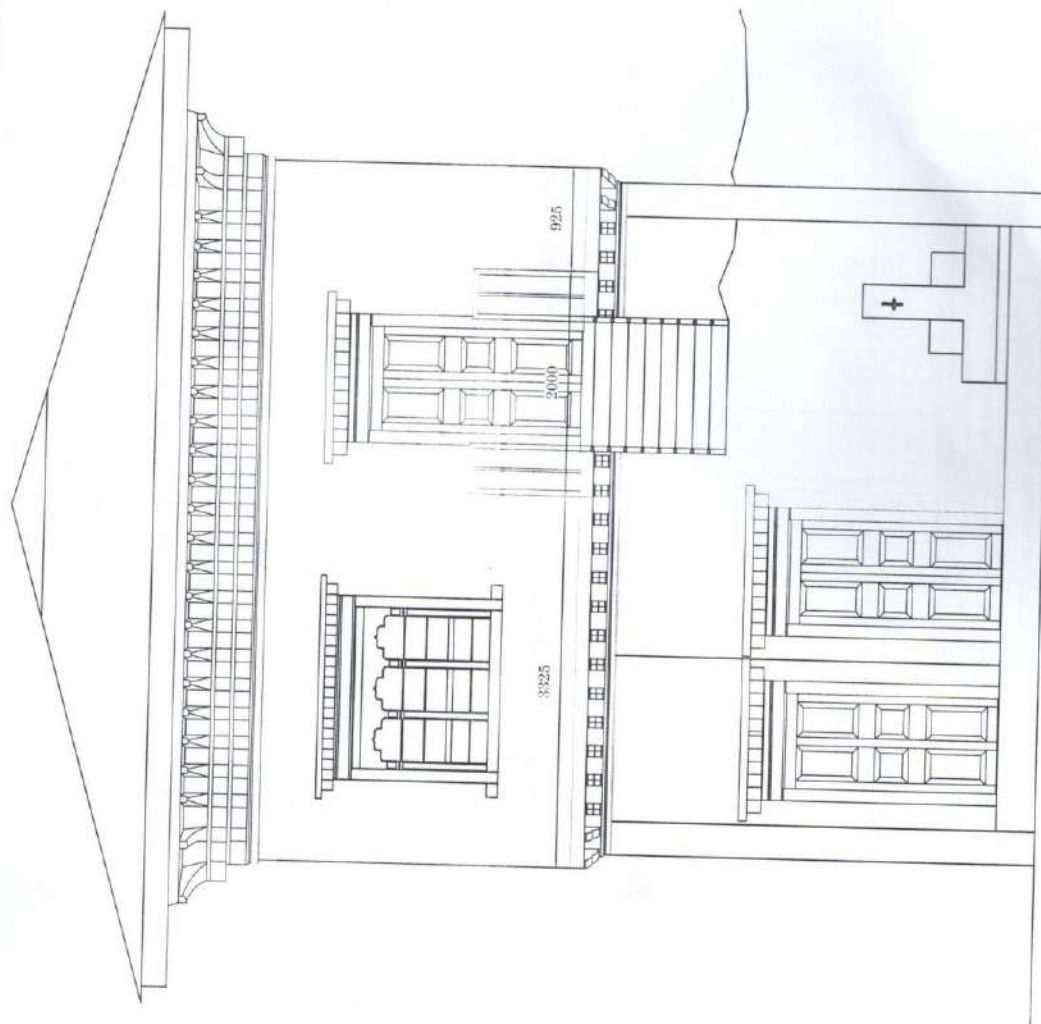
CHECKED

APPROVED

ALL DIMENSION ARE IN MM

Scale : 1:1

Date: 20.09.2018



SIDE ELEVATION

Name of Project: Const. of Kitchen cum Store

Location: Mendrelgang gewog

DZONGKHAG ADMINISTRATION, TSIRANG

DRAWN

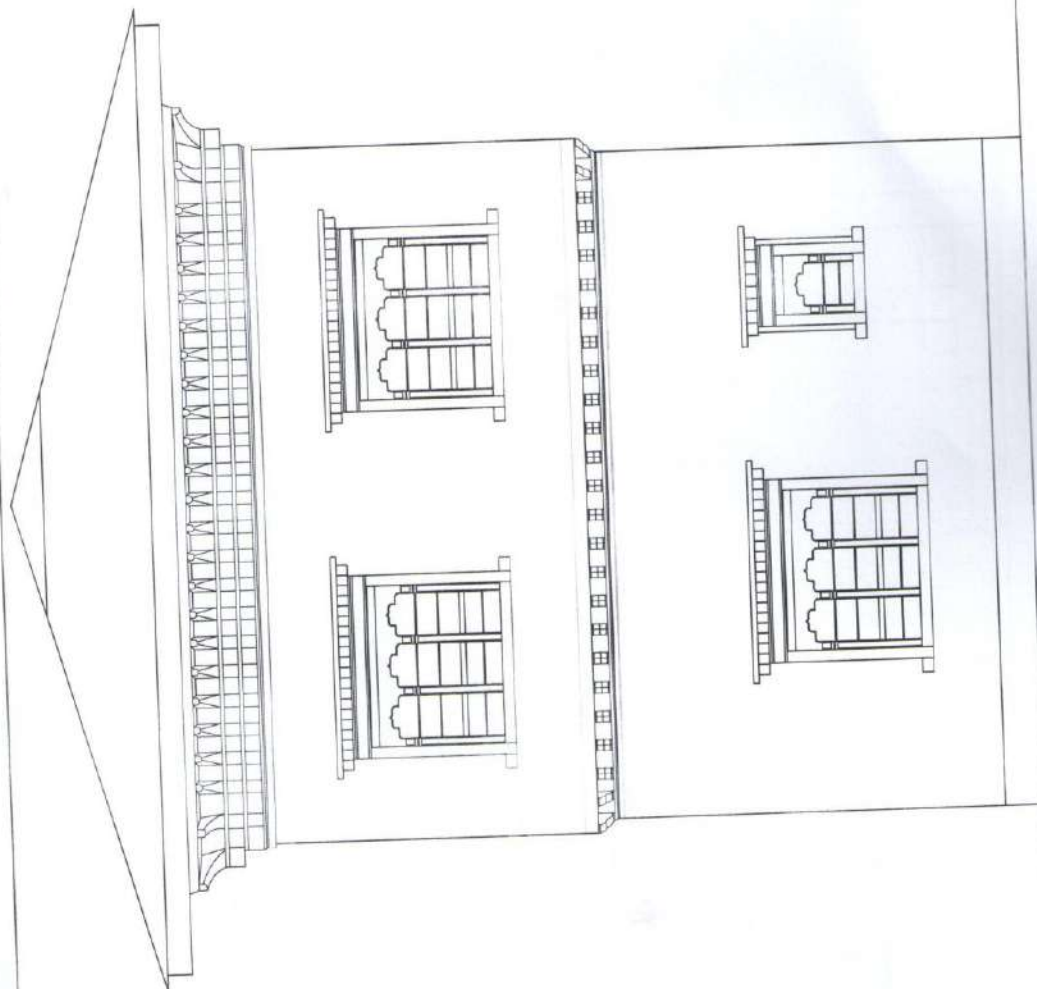
CHECKED

APPROVED

ALL DIMENSION ARE IN MM

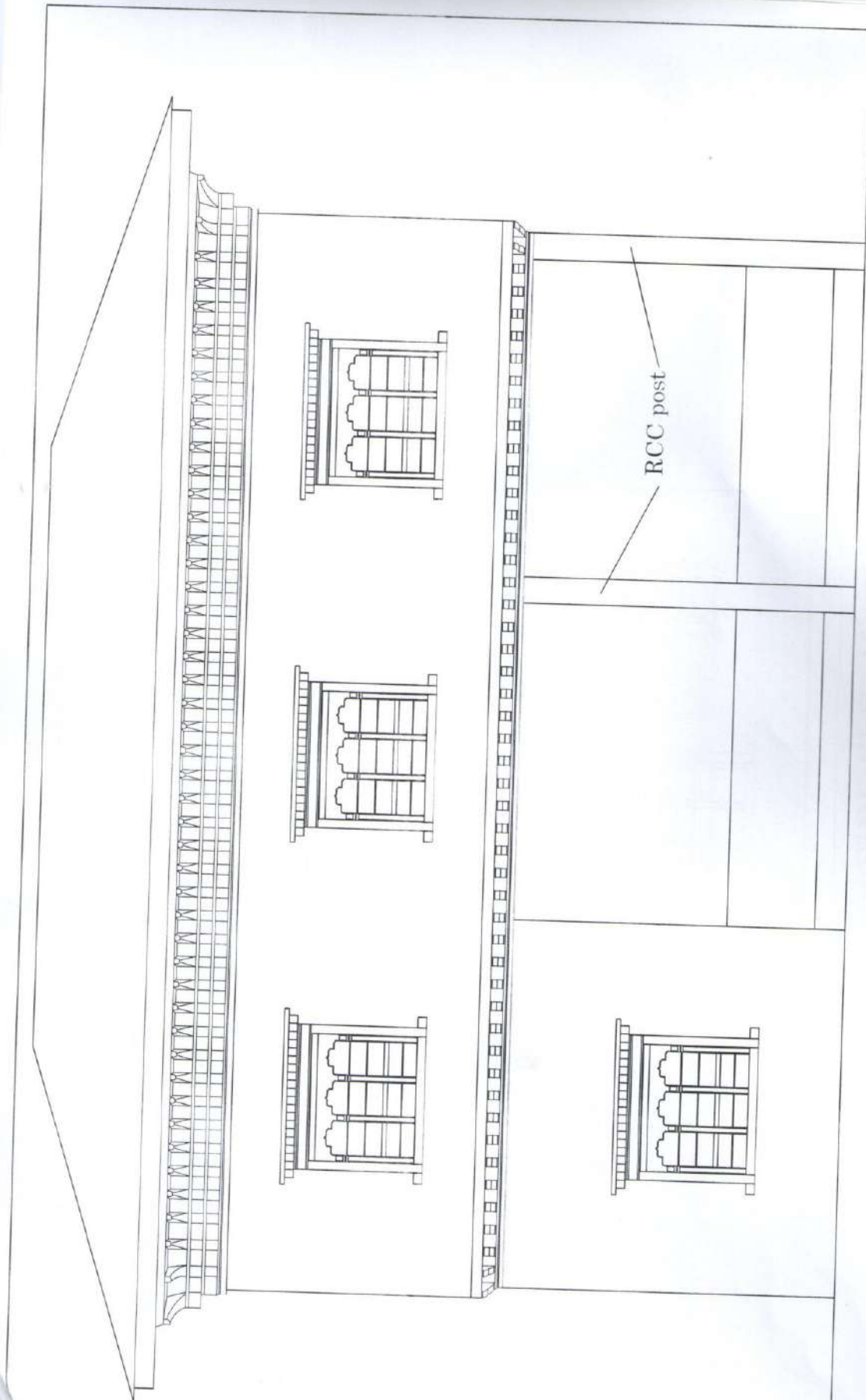
Scale : 1:1

Date: 20.09.2018



SIDE ELEVATION

Name of Project: Const. of Kitchen cum Store	DZONGKHAG ADMINISTRATION, TSIRANG			ALL DIMENSION ARE IN MM	
	DRAWN	CHECKED	APPROVED	Scale : 1:1	
Location: Mendrelgang gewog				Date: 20.09.2018	



RARE ELEVATION

Name of Project: Const. of Kitchen cum Store

DZONGKHAG ADMINISTRATION, TSIRANG

DRAWN

CHECKED

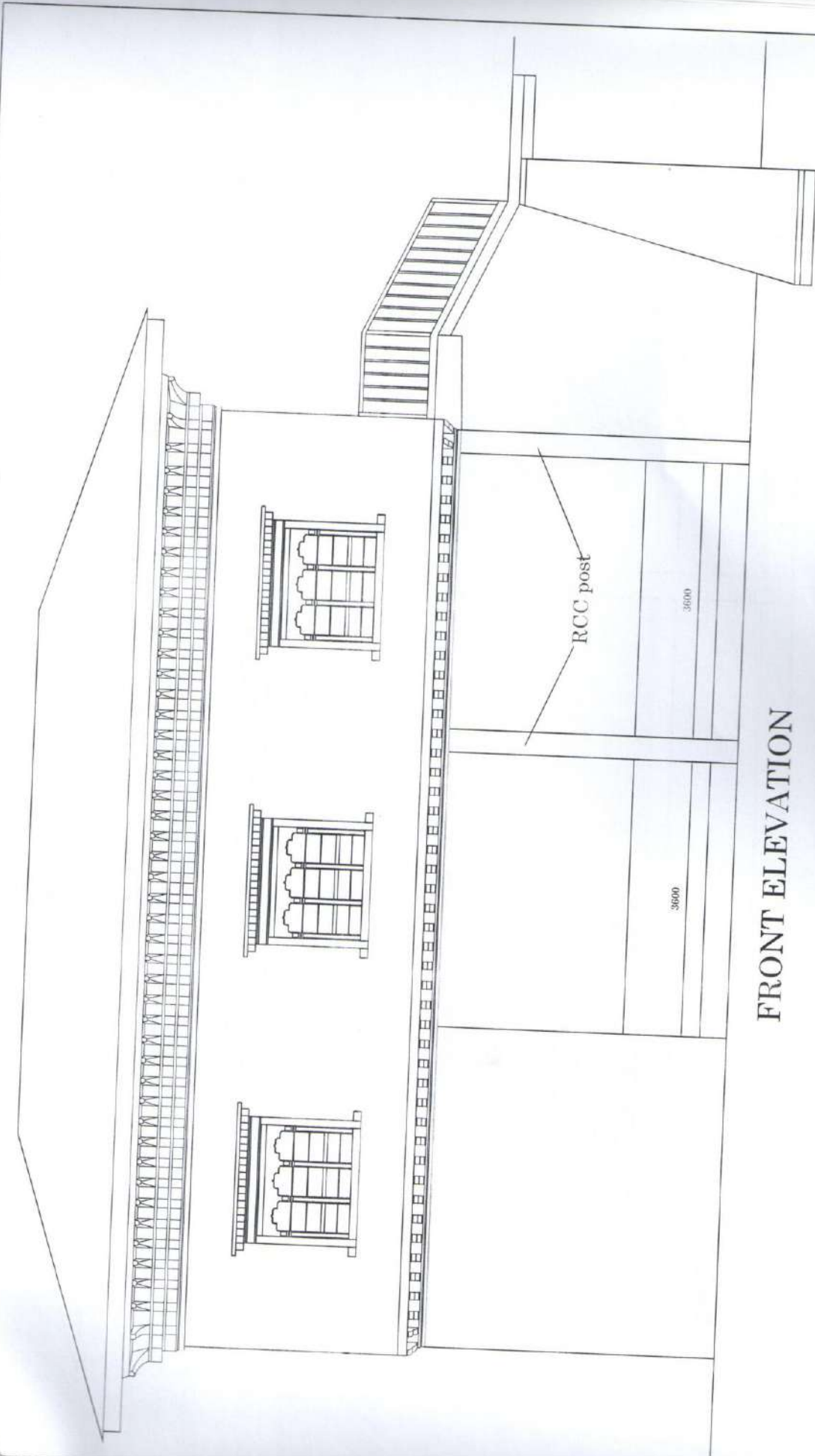
APPROVED

ALL DIMENSION ARE IN MM

Scale : 1:1

Date: 20.09.2018

Location: Mendrelgang gewog



FRONT ELEVATION

Name of Project: Const. of Kitchen cum Store

Location: Mendrelgang gewog

DZONGKHAG ADMINISTRATION, TSIRANG

DRAWN

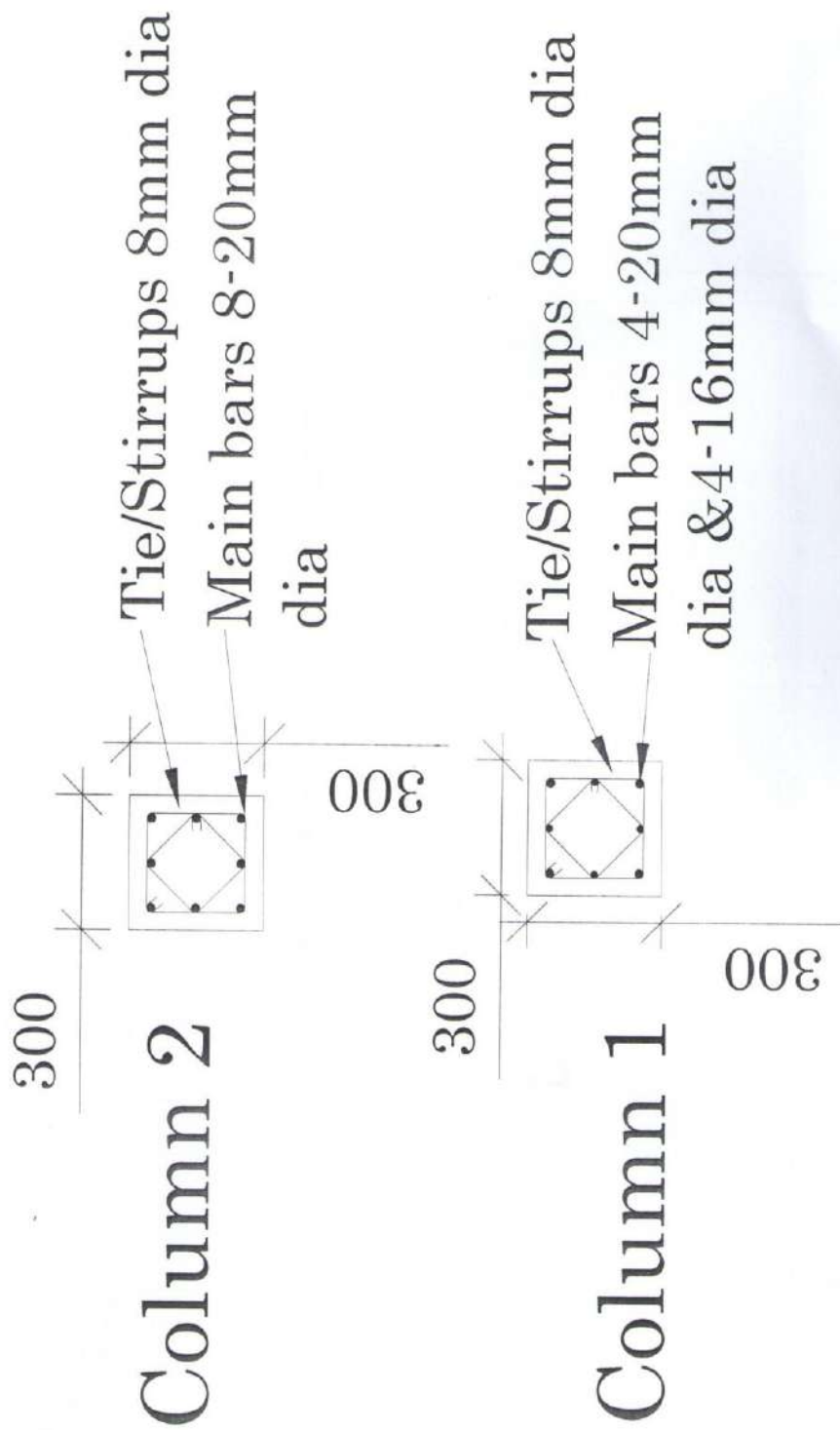
CHECKED

APPROVED

ALL DIMENSION ARE IN MM

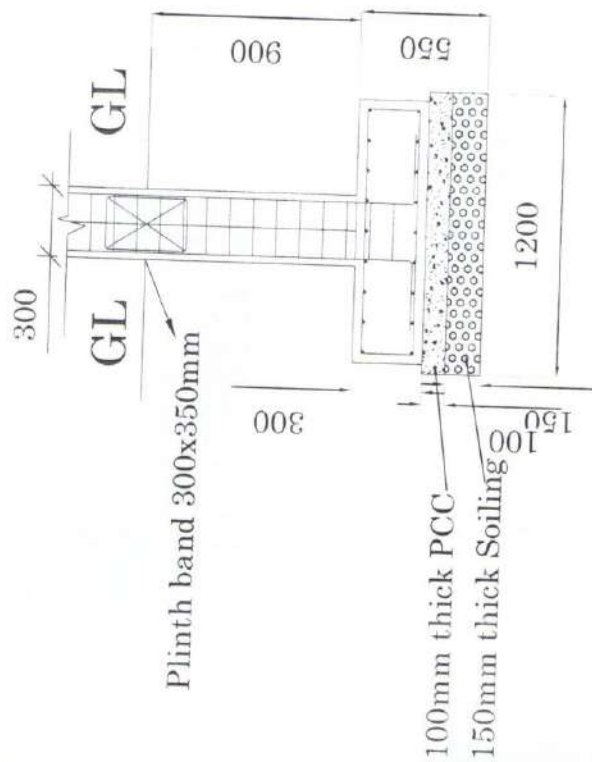
Scale : 1:1

Date: 20.09.2018

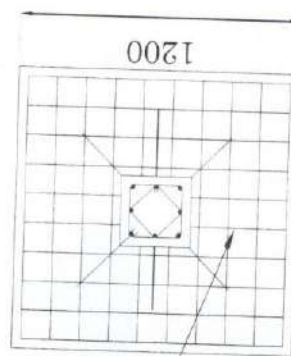
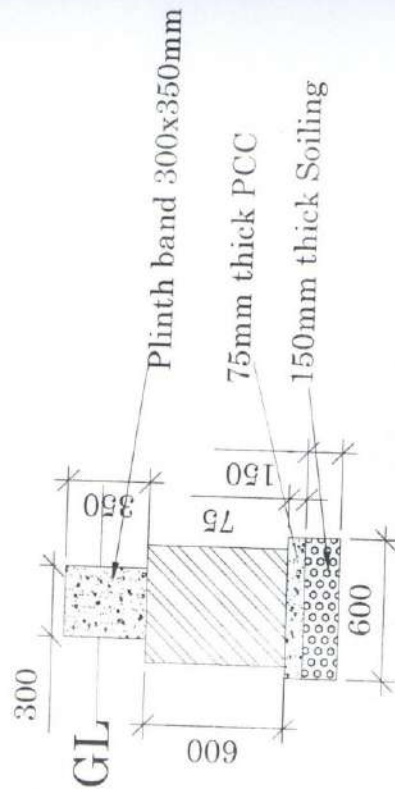


COLUMN SECTION

Name of Project: Const. of Kitchen cum Store	DZONGKHAG ADMINISTRATION, TSIRANG			ALL DIMENSION ARE IN MM
	DRAWN	CHECKED	APPROVED	Scale : 1:1
Location: Mendrelgang gewog				Date: 20/09/2018



MASONRY FDN DETAIL BELOW PLINTH BEAM



TMT 12mm dia bars
@ 120mm c/c both ways

COLUMN FOUNDATION DETAIL

Name of Project: Const. of Kitchen cum Store

Location: Mendrelgang gcwog

DZONGKHAG ADMINISTRATION, TSIRANG

DRAWN

CHECKED

APPROVED

ALL DIMENSION ARE IN MM

Scale : 1:1

Date: 20.09.2018


12000

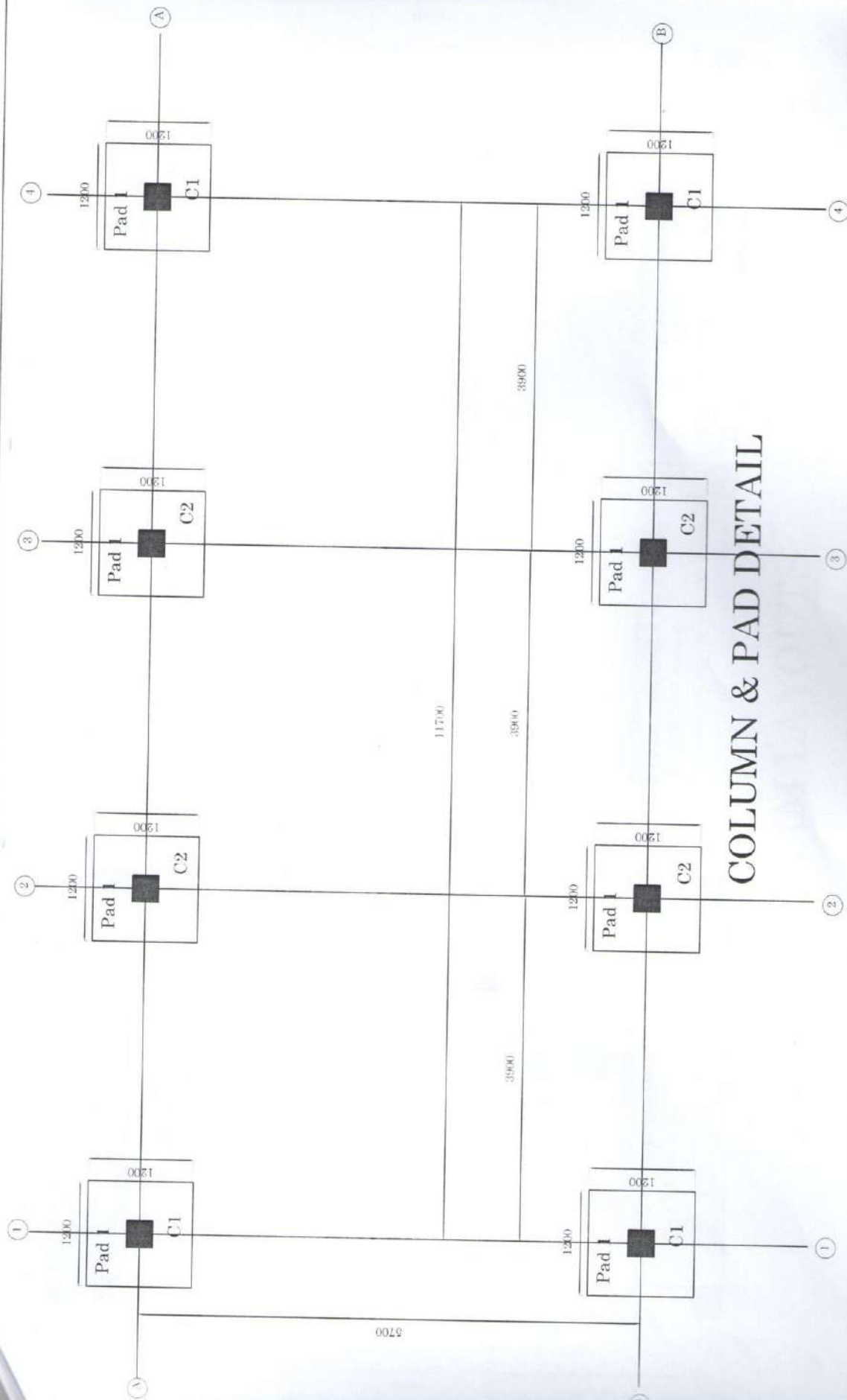
<p>Plinth Beam (300x350mm) FF Beam (300x400mm) RF Beam (300x350mm)</p>	<p>Plinth Beam (300x350mm) FF Beam (300x400mm) RF Beam (300x350mm)</p>	<p>Plinth Beam (300x350mm) FF Beam (300x400mm) RF Beam (300x350mm)</p>	<p>Plinth Beam (300x350mm) FF Beam (300x400mm) RF Beam (300x350mm)</p>
--	--	--	--

6000

6000

BEAM LAYOUTS

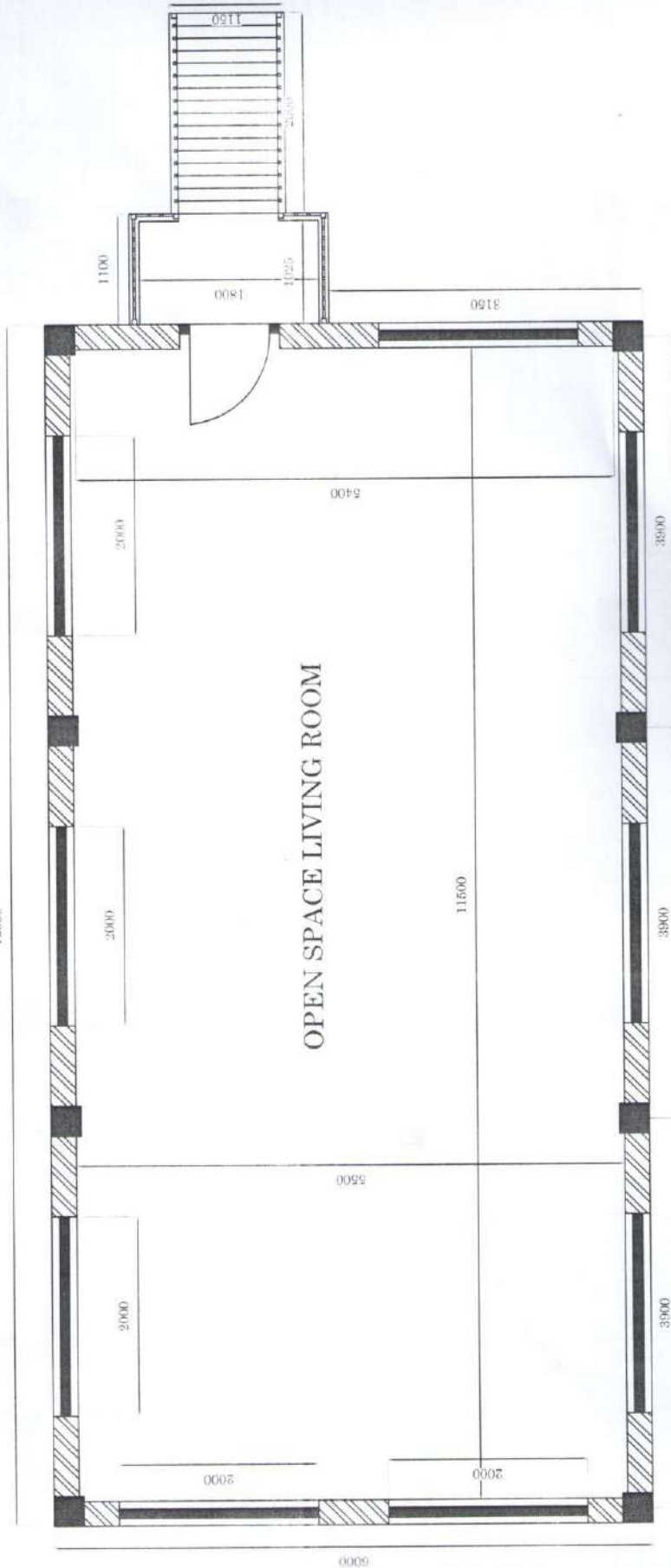
Name of Project: Const. of Kitchen cum Store	DZONGKHAG ADMINISTRATION, TSIRANG			ALL DIMENSION ARE IN MM	
Location: Mendrelgang gewog	DRAWN	CHECKED	APPROVED	Scale : 1:1	
				Date: 20.09.2018	



COLUMN & PAD DETAIL

Name of Project: Const. of Kitchen cum Store	DZONGKHAG ADMINISTRATION, TSIRANG			ALL DIMENSION ARE IN MM	
	DRAWN	CHECKED	APPROVED	Scale : 1:1	Date: 20.09.2018
Location: Mendrelgang gewog					

12000



FIRST FLOOR PLAN

Name of Project: Const. of Kitchen cum Store

DZONGKHAG ADMINISTRATION, TSIRANG

ALL DIMENSION ARE IN MM

DRAWN

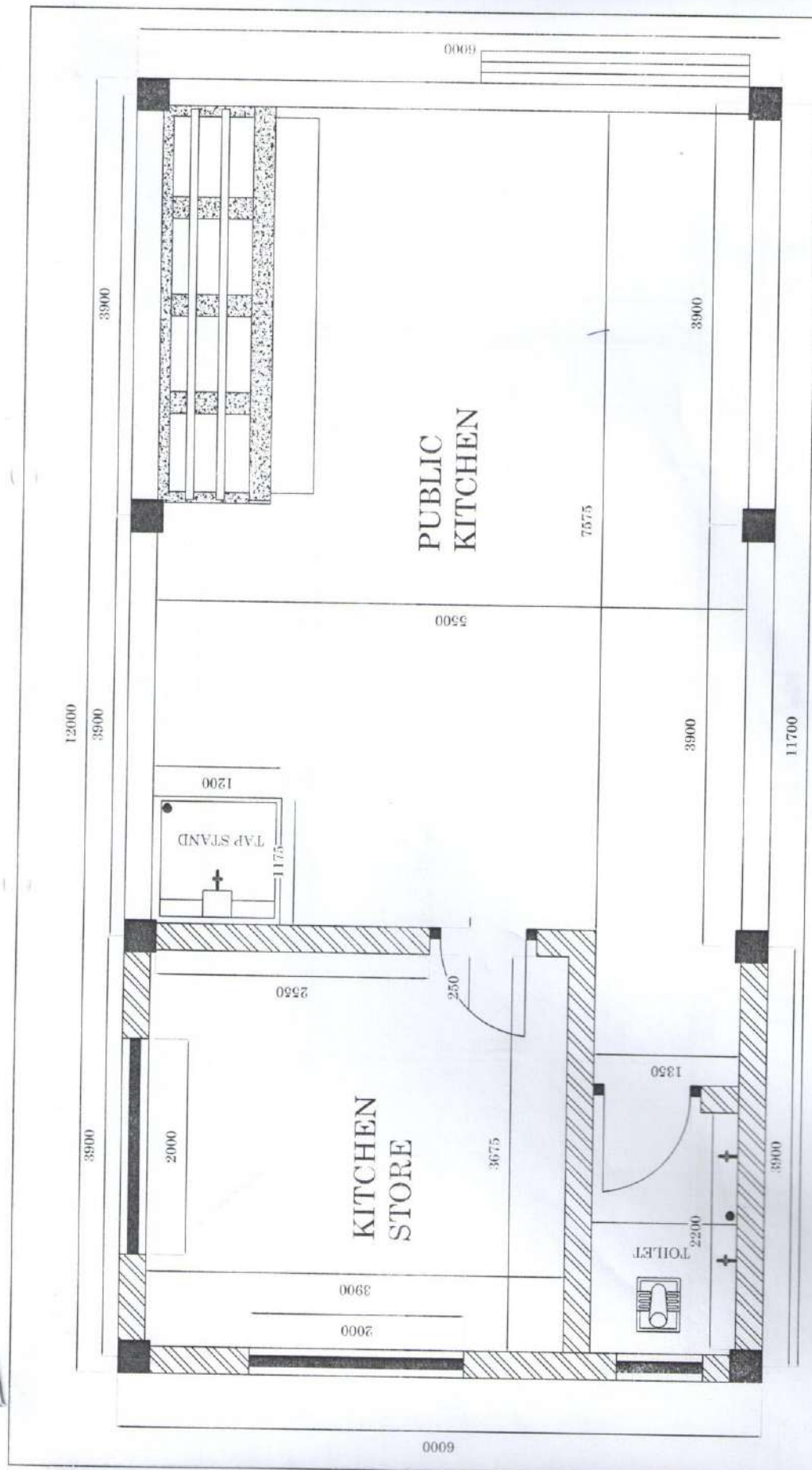
CHECKED

APPROVED

Scale : 1:1

Location: Mendrelgang gewog

Date: 20.09.2018



GROUND FLOOR PLAN

Name of Project: Const. of Kitchen cum Store

Location: Mendrelgang gewog

DZONGKHAG ADMINISTRATION, TSIRANG

DRAWN

CHECKED

APPROVED

ALL DIMENSION ARE IN MM

Scale : 1:1

Date: 20.09.2018